



Tohono O'odham Nation Health Care (TONHC)

COVID-19 Situation Update: February 3, 2021

T-Ñukuda Ha'icu Cihañig

This is a rapidly evolving situation. Information is based upon data as of February 3, 2021 at 7:00 and may change as more data becomes available.

There is surge in the number of COVID-19 cases in the Tohono O'odham Nation

COVID-19 Data among Members of Tohono O'odham Nation (TON)

Total Cases	New Cases This Week	Percent Positive Tests This Week	Recovering (%)	Deaths
1,653	39	14%	52%	58

COVID-19 Contacts Interviewed

3,515

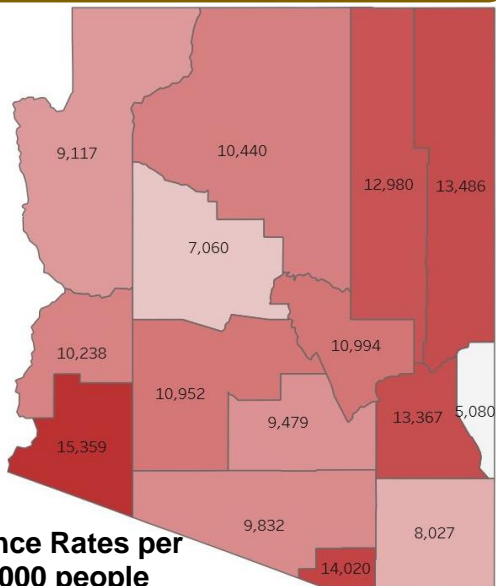
Pima County COVID-19 School Reopening Recommended Delivery Model: Virtual (01/28/2021)

COVID-19 Cumulative Incidence Rate among TON members residing on the Tohono O'odham Nation

8,640 per 100,000

Arizona

10,674 per 100,000

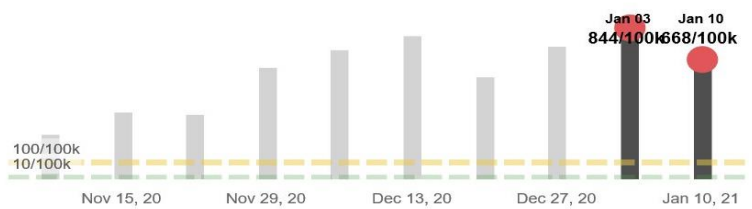


Incidence Rates per 100,000 people

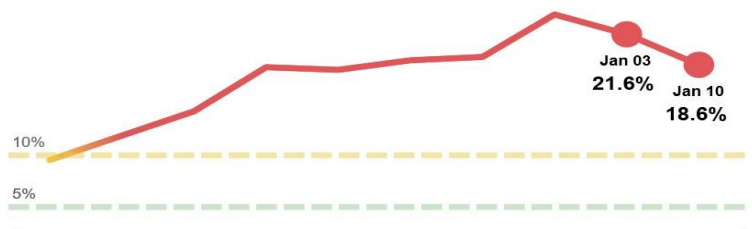
Showing data for **Pima County** (Southeastern Region)

Recommended Delivery Model: **Virtual**

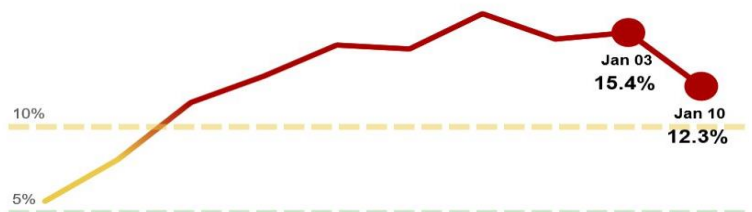
1) Cases per 100,000 individuals



2) Percent positivity



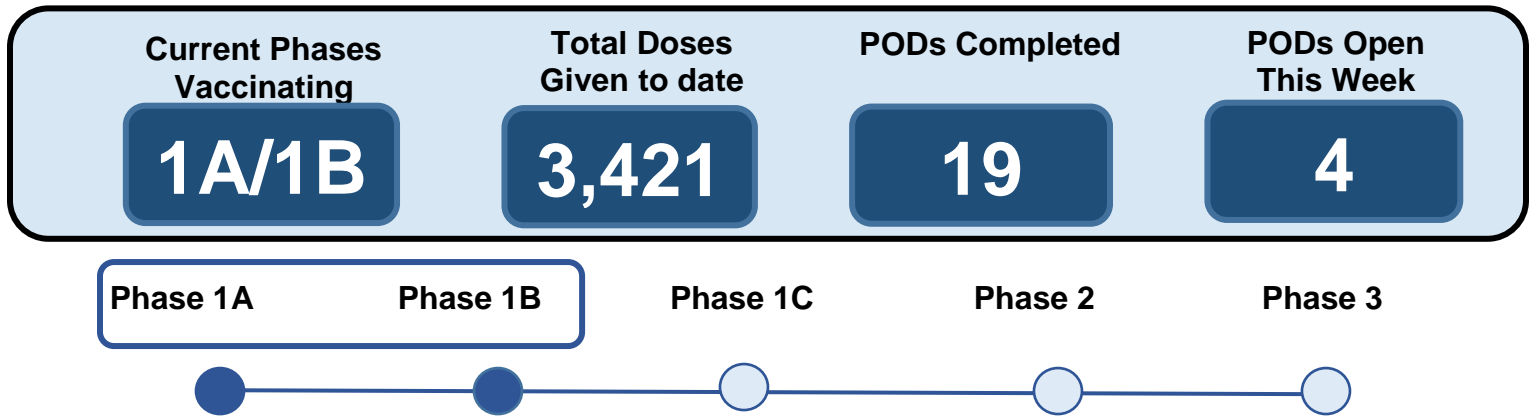
3) Hospital visits for COVID-like illnesses in the region



Incidence rate is the number of new cases of COVID-19 in the population over a specified period. This allows comparison of areas with different population sizes. Population size is from <http://www.tonation-nsn.gov/districts/> (Fall 2016), accessed 8/26/20.

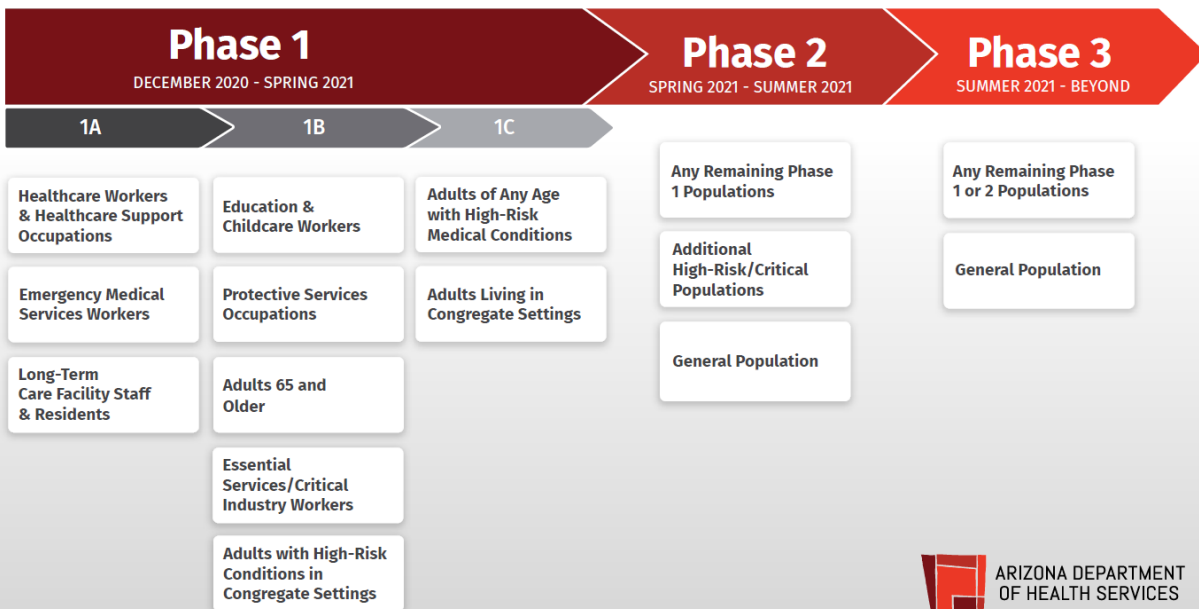
COVID-19 Vaccination Points of Dispensing (PODs) in TON

February 3, 2021: TONHC COVID-19 Vaccination Program is currently in Phase 1A, 1B.



The Moderna COVID-19 received Emergency Use Authorization on December 18, 2020. TONHC will follow guidelines from the Centers for Disease Control and Prevention (CDC) and Arizona Department of Health Services (ADHS) to provide vaccine on the Nation in phases. The guidelines aim to decrease death and serious disease, preserve the functioning of society, and reduce the burden COVID-19 is having on people already facing disparities. ADHS distributes vaccines to health jurisdictions, including Tohono O’odham Nation, based on population. TONHC began to administer COVID-19 vaccinations on December 23, 2020 at Sells Hospital and San Xavier Health Care Center through mass vaccination clinics, also known as “points of dispensing” (PODs) for Phases 1A and 1B.

Arizona COVID-19 Vaccine Prioritization*



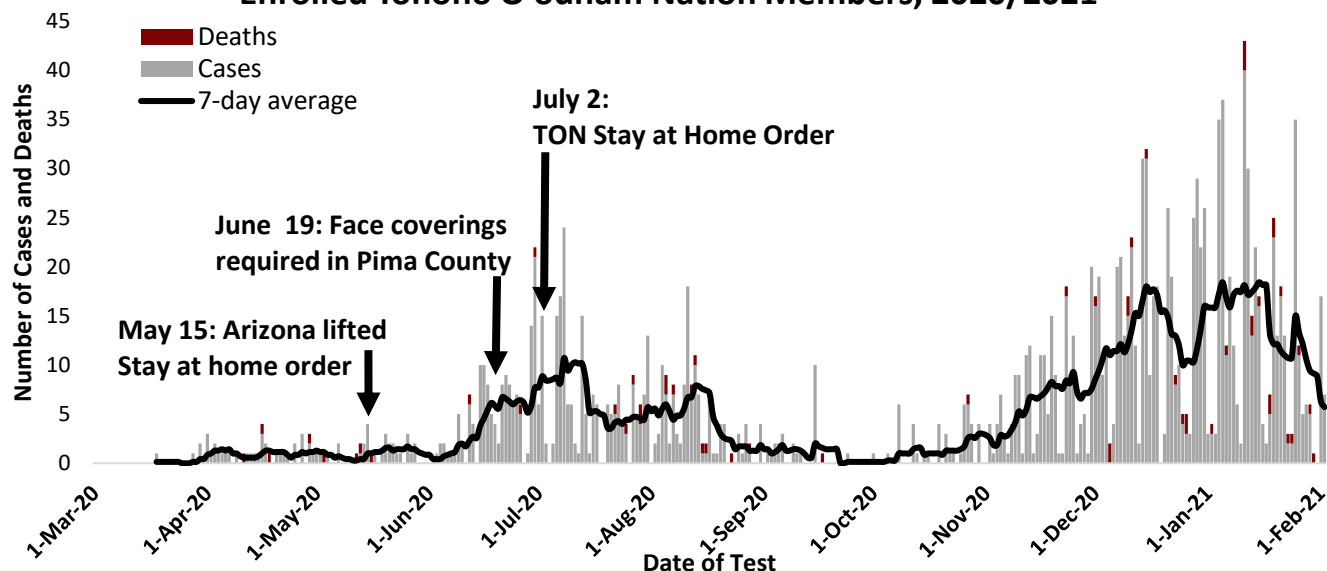
*Distribution groups and timelines of phases shown are tentative. Local allocators may further subprioritize in each phase based on vaccine supply. This information is subject to change due to future vaccine distribution guidance recommendations, FDA approval of vaccines, and vaccine allocation/availability.



COVID-19 Vaccine is currently available through TONHC to members of the Tohono O’odham Nation and other tribes in the Phase 1A and Phase 1B eligible groups. TONHC will also offer vaccination to non-tribal/non-native persons who either work or live on the Tohono O’odham Nation, AND fall into one of the eligible groups according to the Arizona COVID-19 Vaccine prioritization* (above). All persons coming for vaccination are required to bring employee ID or tribal ID. Public Service Announcements will provide dates and information for registration.

Most vaccine PODs will be on Wednesdays. Safety is a top priority in delivering a vaccine. We have a medical provider onsite at all times and infection control monitors. The Moderna vaccine requires an injection into the upper arm, with a booster shot given four weeks later.

Confirmed COVID-19 Cases and Deaths by Date among Enrolled Tohono O'odham Nation Members, 2020/2021



7-day average is the average of cases for that day and the 6-days prior

What's NEW?

The Tohono O'odham Nation (TON) continues to administer COVID-19 vaccinations in Phase 1A and 1B for persons associated with the Tohono O'odham Nation (please see the vaccine section for details about phases, eligibility, and where to be vaccinated). Residents of Pima County and other counties who are not associated with the Tohono O'odham Nation will receive vaccine through their health jurisdictions. COVID-19 vaccine demand outpaces supply and local clinics are expanding as supply becomes available. Arizona plans to add vaccine clinics at retail pharmacies in the next few weeks.

- Over 700,000 COVID-19 vaccinations have been administered across Arizona.
- TONHC has administered 3,421 doses to date.
- Currently, Pfizer and Moderna are the only two vaccines approved under Emergency Use Authorization in the United States.

	Enrolled Member of Tohono O'odham Nation (TON)	Pima County	Arizona
Total Cases	1653	102,712	767,379
Number of cases in last 7 days	40	3,969	28,818
Incidence Rate last 7 days (per 100,000)	199	668	689
Incidence Rate (per 100,000)	8,640	9,452	10,674
Number Deaths	58	1,680	13,576
Deaths (% of total cases)	4%	2%	2%
Number Hospitalized	213	6,281	53,432
Hospitalized (% of total cases)	13%	6%	7%

- Two new vaccines (AstraZeneca and Johnson & Johnson/Janssen) may be evaluated by the Food and Drug Administration (FDA) this month which could expand supply. Vaccines are available to the public generally 1-2 months after FDA, CDC, and ACIP review and approval.
- CDC guidelines for mask wearing, physical distance, isolation and quarantine remain the same at this time for persons, even after vaccination.
- New variants (strains) of COVID-19 with increased contagiousness have been reported from many countries, including the USA.

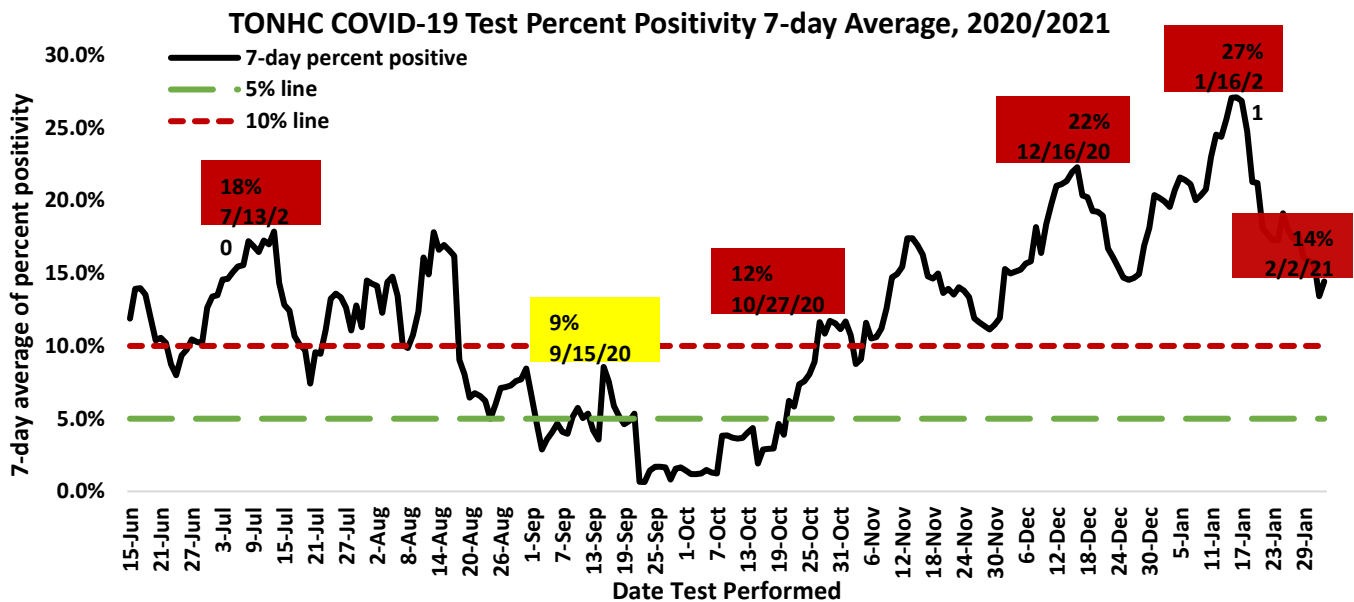
Surge: COVID-19 cases continue to strain hospital and medical resources across the country. Arizona Hospital bed availability:

General beds: 10% (40% of general patients have COVID-19);

Intensive care beds: 11% (53% of ICU patients have COVID-19).

TON Executive Order 2020-09 implemented on 12/2/20, further limits gatherings, continues to enforce a nighttime curfew, and enforces other policies to reduce the spread of COVID-19. Gatherings appear to be the primary cause of outbreaks on the Nation.

11,854 COVID-19 Tests Performed at TONHC



Weekly test percent positivity is calculated using the day tests were performed and 6-days prior (7-day detected "positive" results)/(7-day total tests performed) x 100

Arizona Department of Health Services Benchmarks

Benchmarks	Minimal	Moderate	Substantial
Cases	<10 cases/100,000	10-100 cases/100,000	>100 cases/100,000
Percent Positivity	<5%	5-10%	>10%
COVID-like Illness	<5%	5-10%	>10%

World, USA, Arizona COVID-19 Information

World (WHO):

Total cases: 103,201,340

Total deaths: 2,237,636

Updated: 3 February 2021, 01:45 am GMT-7

USA (CDC):

Total cases: 26,160,210

Total deaths: 441,831

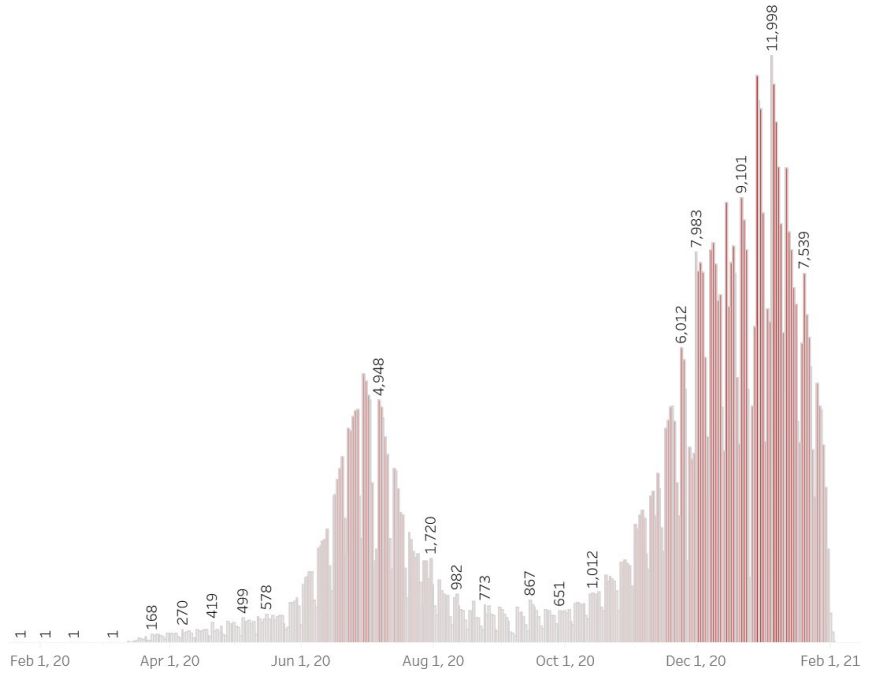
Updated: Feb 2 2021 6:03PM

Arizona (AZDHS): Total cases:
738,561 (1/27) --> **767,379 (2/3)**

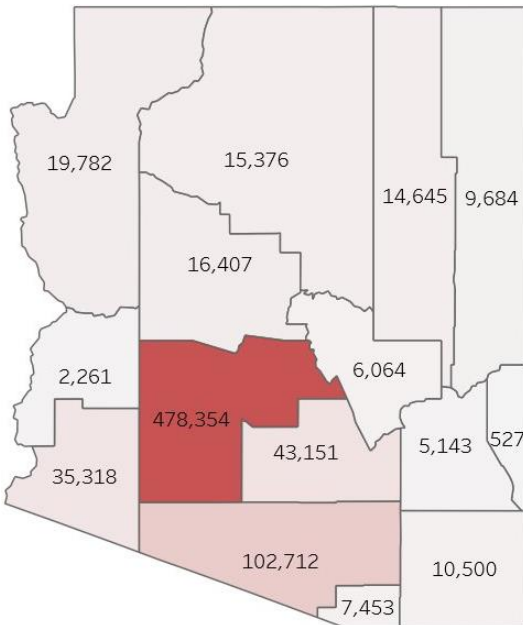
Total deaths in Arizona:
12,643 (1/27) --> **13,576 (2/3)**

Total cases in Pima County:
98,743 (1/27) --> **102,712 (2/3)**

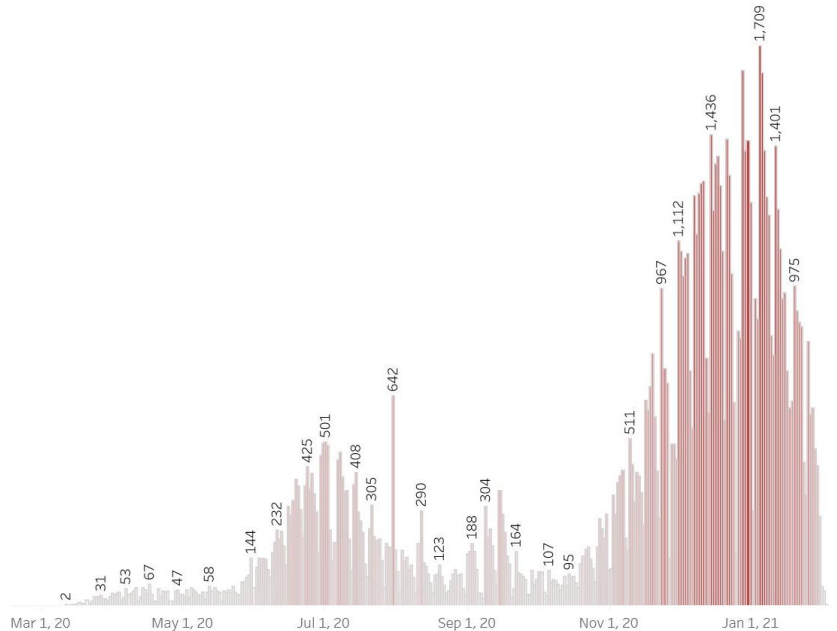
Arizona (AZ) Confirmed COVID-19 Cases by Day (2/3)



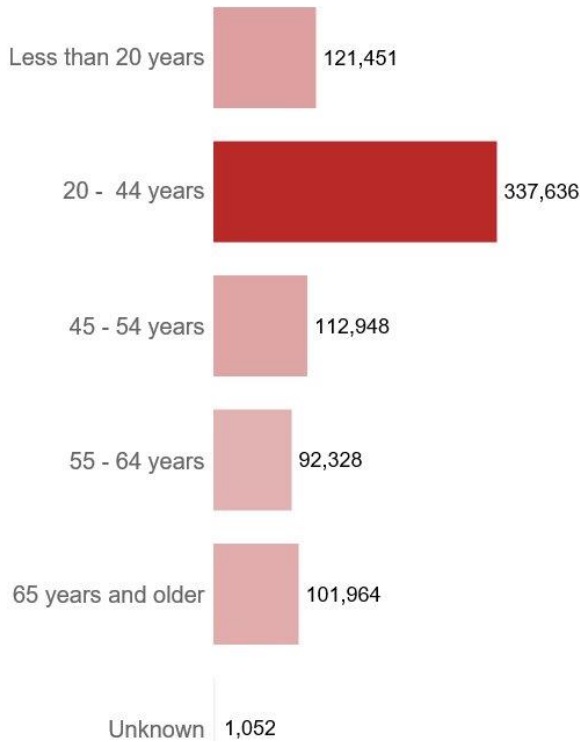
COVID-19 Cases by County (2/3)



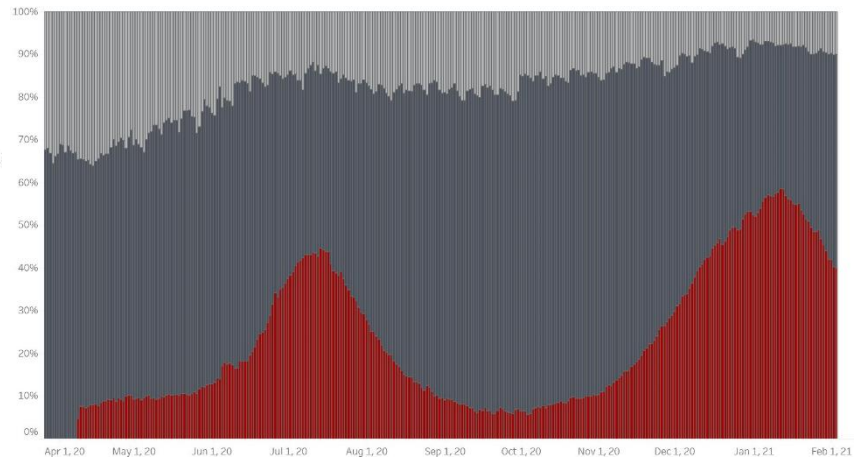
Pima County Confirmed COVID-19 Cases by Day (2/3)



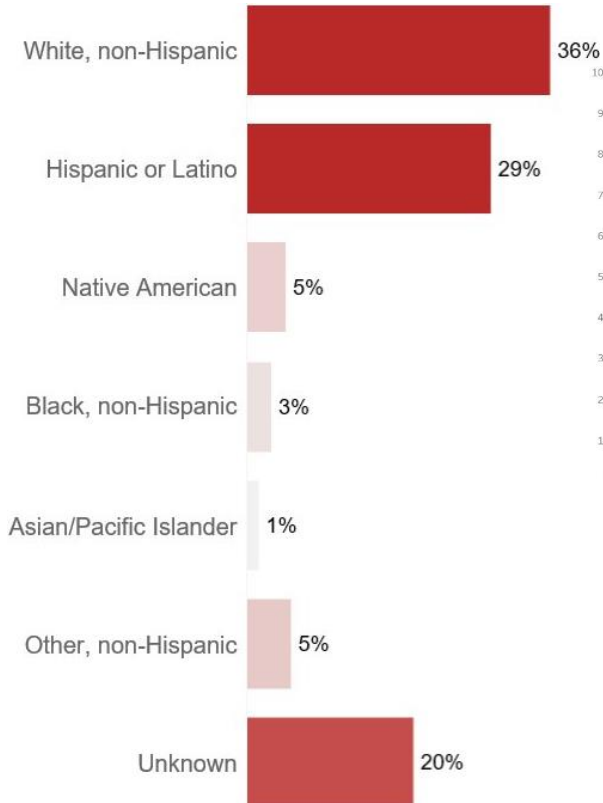
AZ COVID-19 Cases: Age Distribution (2/3)



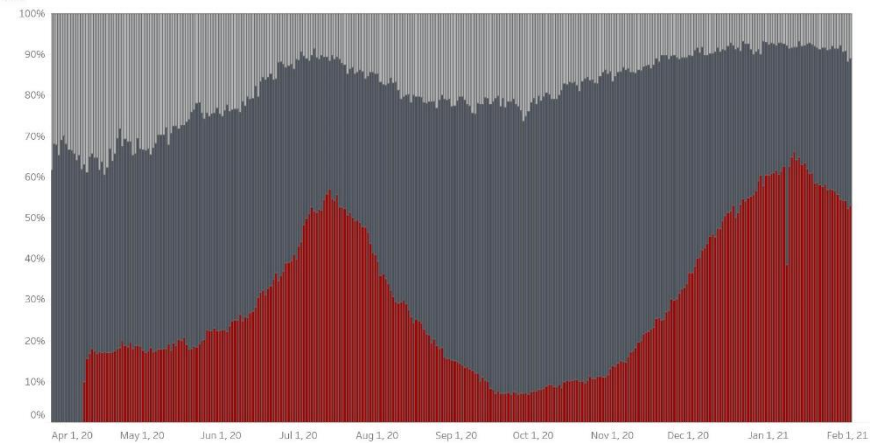
Number of Inpatient Beds in Use in AZ (90% in use on 2/2/21, 40% due to COVID-19)



AZ COVID-19 Cases: Race/Ethnicity (2/3)

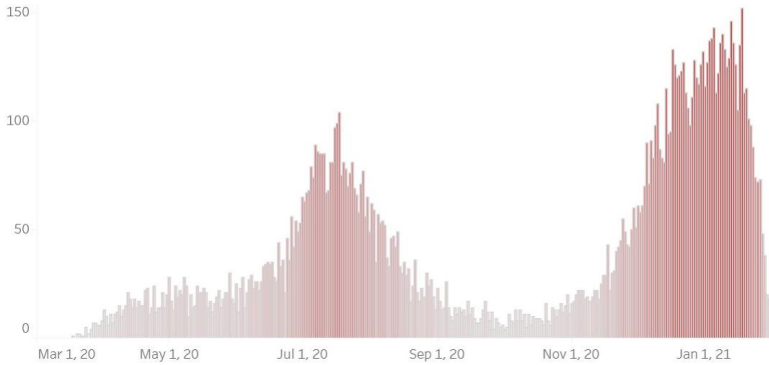


Number of Intensive Care Unit (ICU) Beds In Use (89% in use 2/2/21, 53% due to COVID-19)

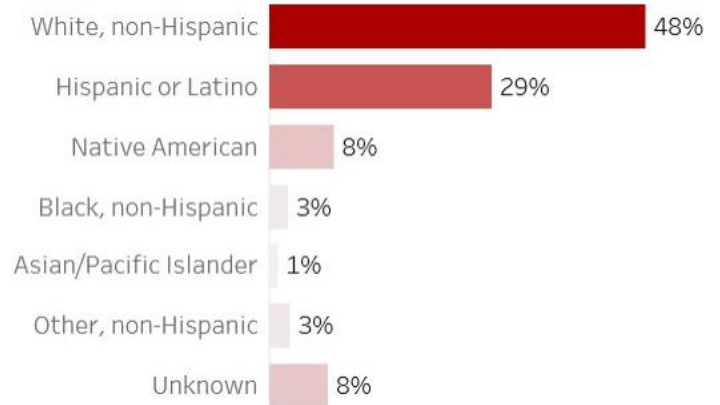


Arizona (AZDHS): 13,576 deaths, Updated February 3, 2021

COVID-19 Deaths by Date in Arizona



AZ COVID-19 Deaths by Race/Ethnicity



Tohono O'odham Nation COVID-19 Positive Case Information

	Enrolled Member of Tohono O'odham Nation	Enrolled Member of Another Tribe or Other	Total
Residing within Boundaries of Tohono O'odham Nation	1128	42	1170
Residing outside Boundaries of Tohono O'odham Nation	525	225	750
Total	1653	267	1920

1,653 members of the Tohono O'odham Nation have tested positive* for COVID-19 (as of 1/27/2021 at 7:00). On 1/27/2021, there were 1,614. This represents a **2%** increase over the last week. † The number of positive cases is **23X** the number 34 weeks ago (72 on 6/9/2020).

1128 members of the Tohono O'odham Nation who tested positive reside in the Tohono O'odham Nation. On 1/27/2021, there were 1101. This represents a **2%** increase† over the last week. The number of persons who reside in the Tohono O'odham Nation and tested positive for COVID-19 is almost **47X** the number 34 weeks ago (24 cases on 6/9/2020).

This is consistent with a surge in cases beginning approximately 10/26/2020.

- **865** members (52%) are recovering (among members of the Tohono O’odham Nation)[†]
- **58** deaths among members of the Tohono O’odham Nation and **4** members of another tribe.
- **3** deaths in hospital in Tohono O’odham Nation, **55** in hospitals outside the Tohono O’odham Nation.

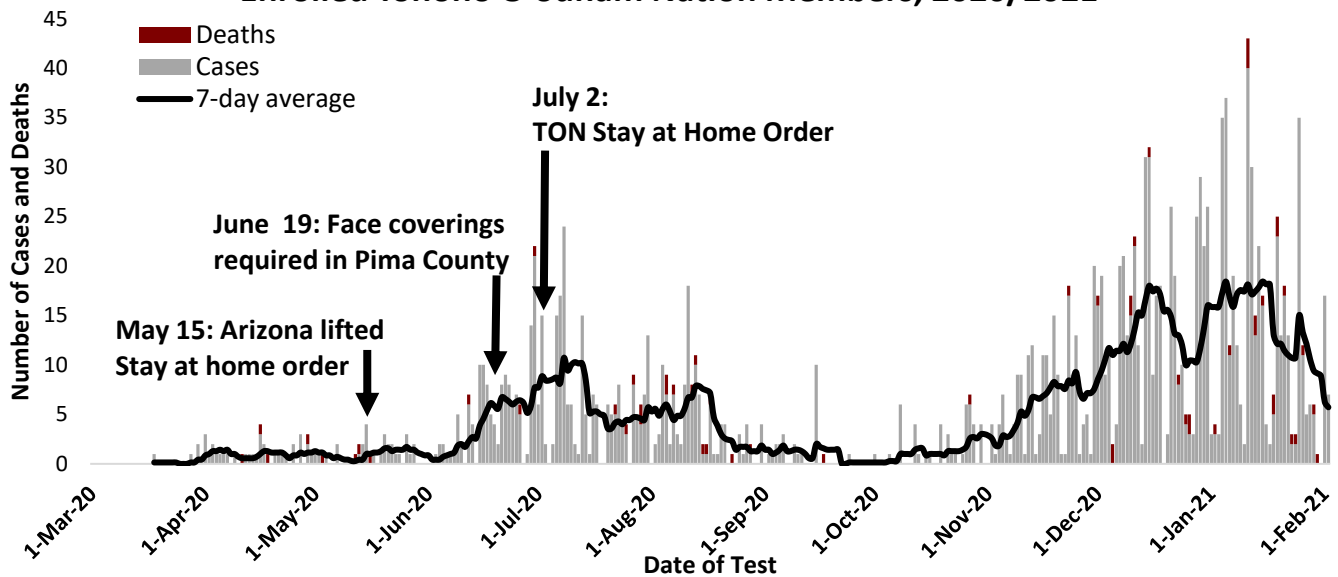
*COVID-19 positive result means COVID-19 test result of “detected”.

[†]Defined as percentage change (most recent number – previous number)/previous number * 100

[§]Absolute change in cumulative case count is the number of cumulative cases through week 2 subtracted from the number of cumulative cases through week 1, [week2 – week1]

[¶]Recovering is defined as having diagnosis/symptom onset 14-days ago, improving, and no longer hospitalized.

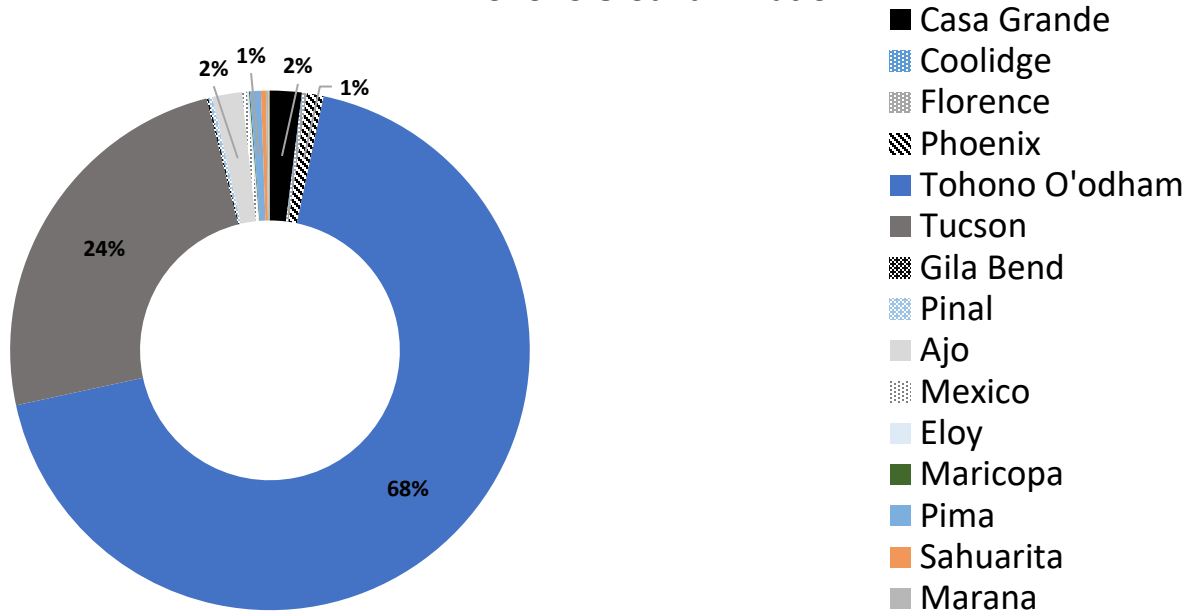
Confirmed COVID-19 Cases and Deaths by Date among Enrolled Tohono O'odham Nation Members, 2020/2021



7-day average is the average of cases for that day and the 6-days prior

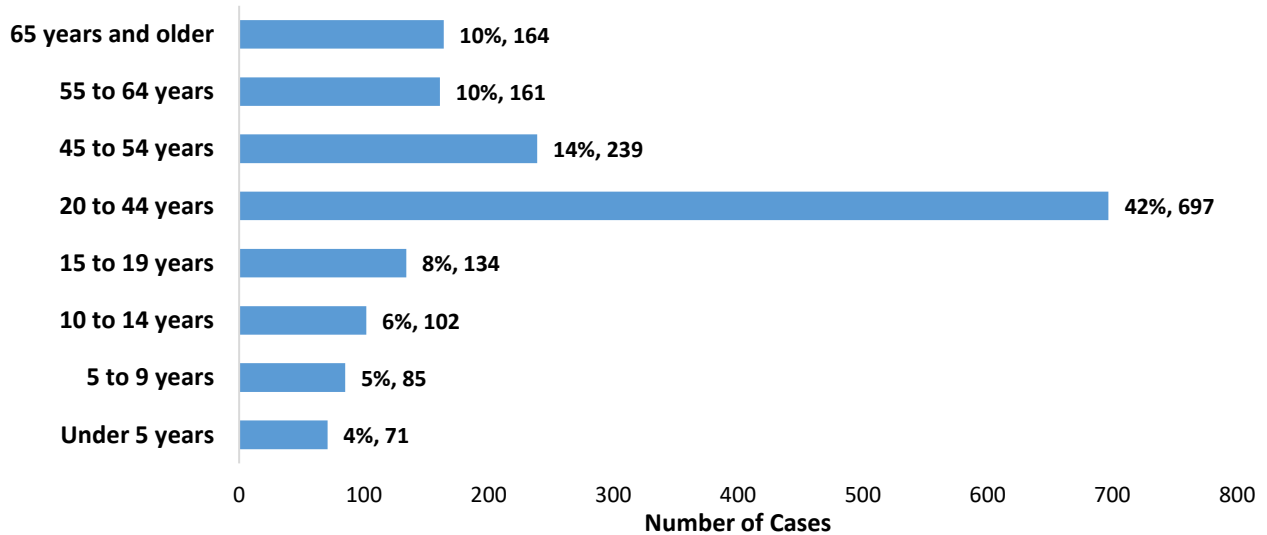
7/22/2020 was the first week that the percentage of persons residing in the Tohono O’odham Nation was over 50% of the cases.

Region of Residence for COVID-19 Cases among Members of the Tohono O'odham Nation



Some areas are <1%

Age Distribution of COVID-19 Cases among Tohono O'odham Members, 2020



**Laboratory-confirmed COVID-19 among Tohono O'odham Nation Enrolled Members,
2020/2021**

	Count (n)	Percent (%)	State of Arizona Percent (%)
TON members tested positive for COVID-19	1653		
Asymptomatic/Pre-symptomatic	358	22%	
TON Reside in Reservation	1128	68%	
Hospitalized	213	13%	7%
Recovering	865	52%	
Died	58	4%	2%

	Median (years)	Minimum (months)	Maximum (years)
Age	35	0	100

	Male	Percent (%)	Female	Percent
Sex	678	41%	975	59%

At TONHC, we received the first presumptive positive test result for COVID-19 for a patient seen at San Xavier Health Center in the same day clinic on 3/30/2020. In response, we reached out to clinical staff and the patient/household/community to discuss exposure risk, how to monitor for symptoms, and help guide any recommendations for isolation or quarantine. We anticipate more cases in the future, and we are working together to tackle this challenge. Employee health has reached out to staff for contact tracing. Public health nursing has conducted community contact tracing. Please remember to keep patient and employee results confidential.

COVID-19 Laboratory Testing at TONHC

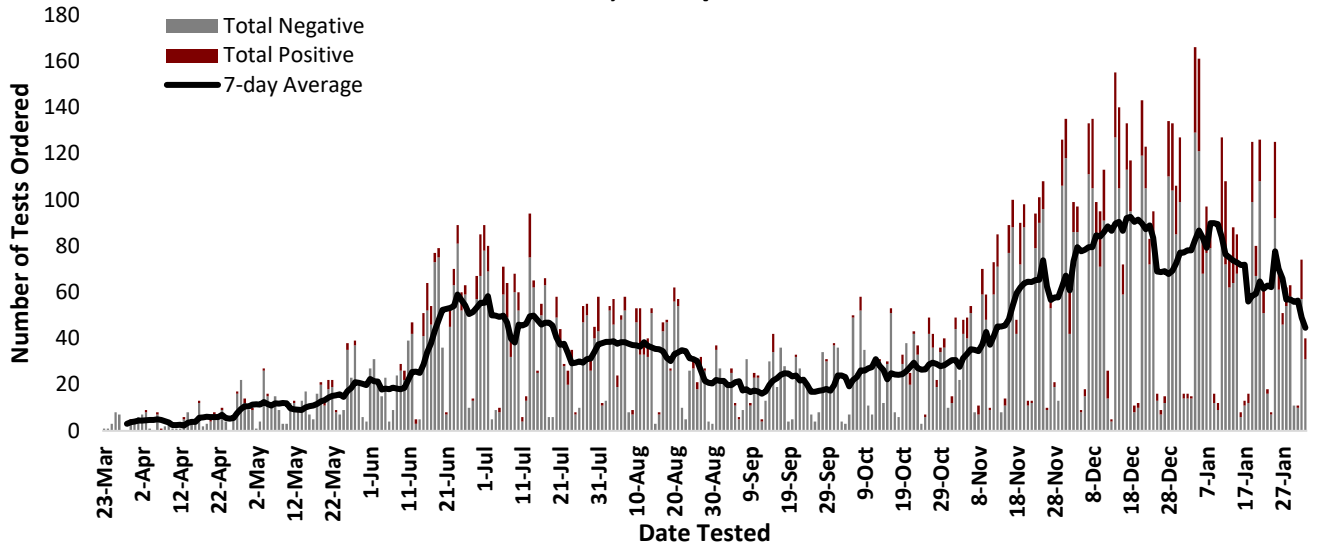
TONHC total number of COVID-19 testing (as of 2/3/2021 at 7:00): **11,854** tests performed:

- 10892 = patients (anyone who receives care at a TONHC facility)
- 866 = employees
- 96 = first responders

We continue to increase our testing capacity. On 1/27/2021, there were 11,534 tests. As of 2/3/2021, **1,630** tests results were positive* for COVID-19. On 1/27/2021, there were 1,584 tests. The number of positive test results are almost **43x** the amount compared to 33 weeks ago (since 6/9/2020). 38 total tests were positive on 6/9/2020. **76** TONHC employees have tested positive.

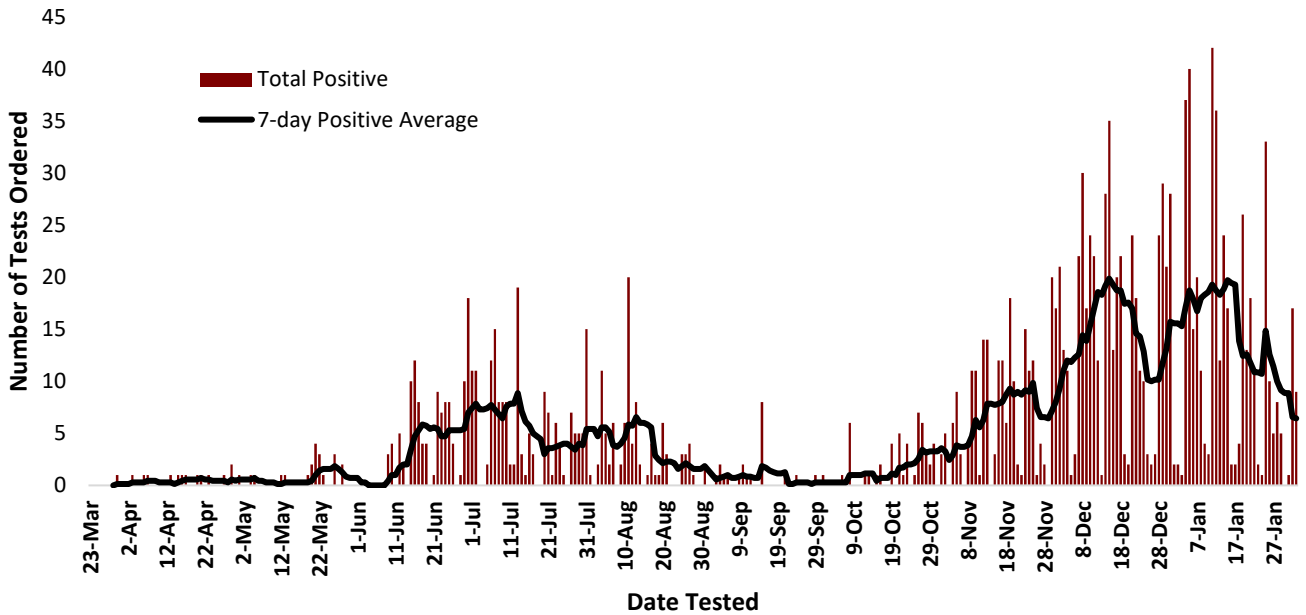
As of 2/3/2021 at 7:00, 7,401 individual TONHC patients have tested for COVID-19. This comprises **37%** of the TONHC User Population. User Population is defined as patients who have received care at TONHC at least twice in the past three years.

COVID-19 Tests Performed at Tohono O'odham Health Care by Result, 2020/2021



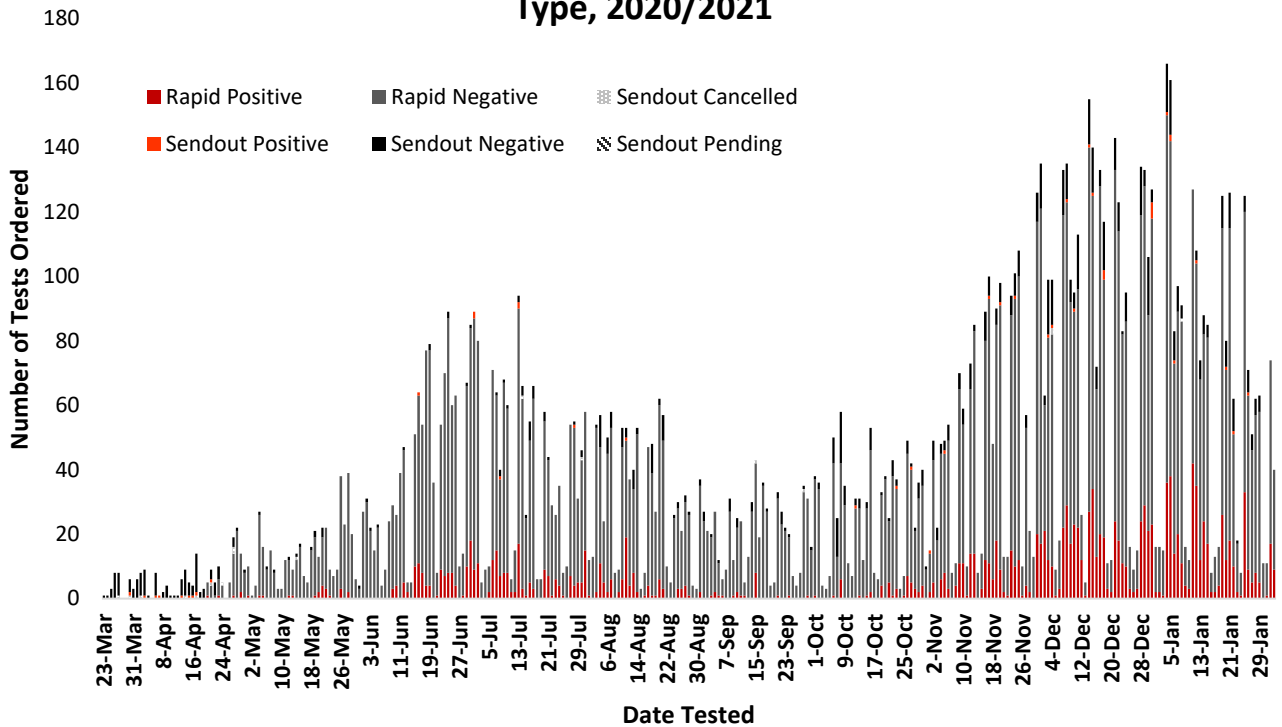
7-day average is the average of cases for that day and the 6-days prior

COVID-19 Positive Tests Performed at Tohono O'odham Health Care, 2020/2021



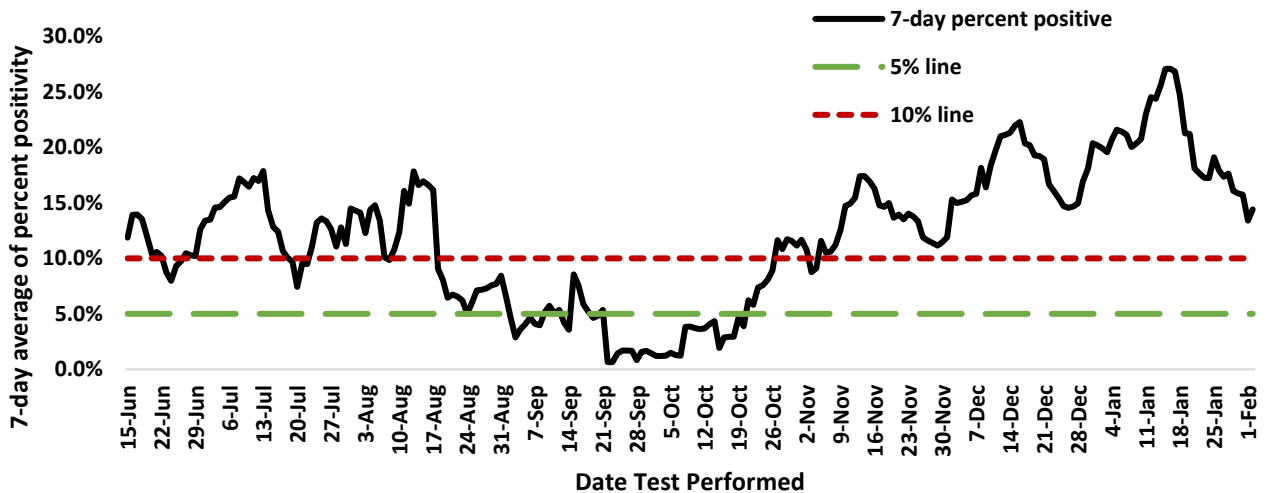
7-day average is the average of cases for that day and the 6-days prior

COVID-19 Tests Performed at Tohono O'odham Health Care by Type, 2020/2021



COVID-19 testing began at TONHC on March 23, 2020. Same-day testing is available at San Xavier, Sells, and San Simon. This means all the equipment to run the tests are in the clinic laboratories at San Xavier, Sells, and San Simon. We began on-site same-day testing on April 20, 2020. There are two types of tests: send-out test or same-day/rapid test. Send-out testing is used for specific cases. As of 9/1/2020 on-site qualitative total antibody testing is available for specified cases.

TONHC COVID-19 Test Percent Positivity 7-day Average, 2020/2021



* Weekly test percent positivity is calculated using the day tests were performed and 6-days prior (7-day detected "positive" results)/(7-day total tests performed) x 100%

We have nine on-site Abbott ID NOW™ machines that are used for same-day testing. We are pursuing avenues for more testing machines for on-site testing. In addition to expand our testing capabilities, medical assistants at TONHC completed competencies in performing COVID-19 nasal swab testing to assist with performing testing

Effective 9/24/2020, patients with no symptoms and no known exposure to someone with COVID-19 can be tested at TONHC. For all testing, please call and schedule an appointment at your clinic.

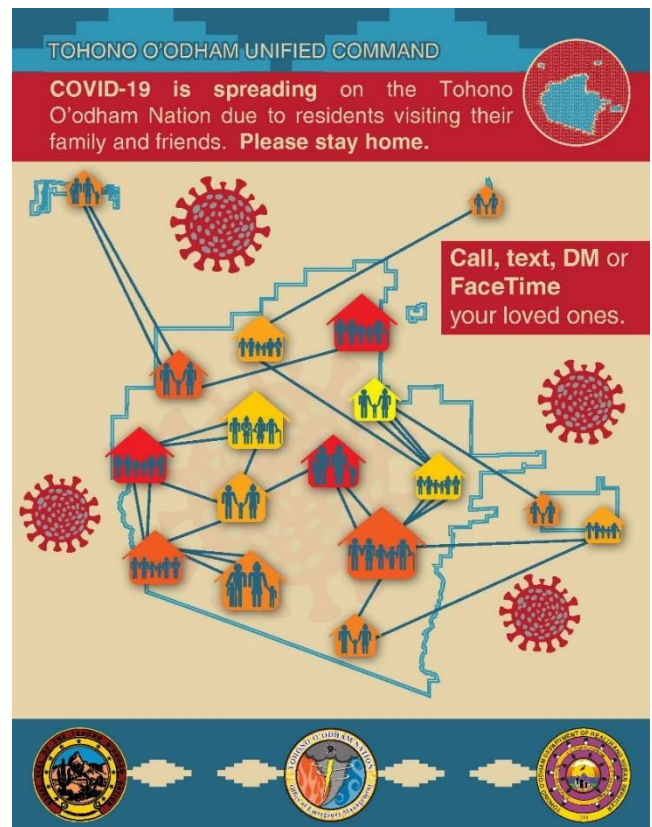
Please note testing criteria is accurate as of 9/25/2020 and may change in the future.

*COVID-19 positive result means COVID-19 test result of “detected” for tests performed at TONHC (San Xavier, San Simon, Sells, and off-site).

†Absolute change in cumulative case count is the number of cumulative cases through week 2 subtracted from the number of cumulative cases through week 1, |week2 – week1|

Local Surge in TON in COVID-19 Cases

Daily counts COVID-19 cases in Arizona have increased after Arizona relaxed restrictions on movement and stay at home orders. Hospital bed occupancy is rising rapidly across the state, especially in ICUs. **TONHC initially detected a surge (sudden, sharp increase) in cases 6/15/2020. We continued to have COVID-19 cases increasing throughout July and August. In September we continued to have cases of COVID-19, but less than in the summer. We detected another surge (sudden, sharp increase) starting 10/26/2020.** This means there is a sudden upward trend in the number of cases. Our team strongly recommends to continue prevention measures including avoiding all unnecessary travel and gatherings. We also recommend the use of masks/cloth face coverings for all persons in public settings. Please continue to share the messaging of minimizing group contact, including neighbors and relatives not in one’s own household.



Stay at home as much as possible



Practice physical distancing (remaining at least 6 feet away from others)



Clean your hands often

Our testing algorithms aim to identify symptomatic persons, asymptomatic persons with known potential COVID-19 exposures, and persons who will enter high-risk or congregate settings (surgery, detention, foster care, hospitalization, dorms, etc.).

We all need to do our part and to continue to practice physical distancing and frequent hand hygiene.

Please share with community members:

The best way to prevent illness is to avoid exposure to this virus. These simple actions will lessen your chances of catching COVID-19 and spreading it to others:



- Everyone should wear a mask/cloth face covering in public when physical distancing of 6 feet is not possible (except children ages less than 2 years and persons with a medical contraindication).
- Limit direct physical contact to only persons who live in the same household.
- Avoid all group activities/gatherings, even relatives if they do not live with you until further notice.
- Maintain “stay at home” behavior except for essential needs.
- Report illnesses and possible COVID-19 exposures immediately to your provider.
- Frequently wash hands with soap and water, and use alcohol-based hand sanitizer if unable to wash hands.

Symptoms to Monitor



COVID-19 symptoms to monitor for: fever, chills, cough, difficulty breathing (shortness of breath), runny/stuffy nose, sore throat, headaches, fatigue, abdominal pain, vomiting, diarrhea, new loss of taste or smell. If you have any of these symptoms, please stay home and do not go to work, school, or be in public areas.

Face Mask Guidance: All employees at TONHC must wear a surgical facemask while at work. For patients and visitors coming to TONHC, please wear your own cloth face covering upon arrival to the facility. If not available, you will be offered a facemask (if symptomatic) or cloth face covering.

When in the community setting (when not working at TONHC) here are three key things to consider when choosing or making a cloth face coverings.



1. **Multiple Layers.** Mask effectiveness has been shown to improve when multiple layers of fabric are used.
2. **Effective Fabric.** Regarding what type of mask to wear, it has been shown that mask efficiency improves when multiple layers of fabric are used (such as high thread count cotton) and when using fabric combinations. For example, filtration efficiencies of hybrid materials (such as cotton–silk, cotton–chiffon, cotton–flannel) was >80-90%. Cotton performs better at higher weave densities (i.e., thread count). Gaps caused by improper mask fit can decrease effectiveness significantly so having a good fit is very important.
3. **Good Fit.** Gaps caused by improper mask fit can decrease effectiveness significantly so having a good fit is very important.

Who should NOT use cloth face coverings: children under age 2, or anyone who has trouble breathing, is unconscious, incapacitated or otherwise unable to remove the mask without assistance.

Adapted from Maricopa guidance, <https://www.maricopa.gov/5489/Protect-Yourself-and-Others>, accessed 6/18/20.

Arizona COVID-19 School Benchmarks

Pima County COVID-19 School Reopening Recommended Delivery Model: Virtual

The Arizona Department of Health Services (ADHS) recommends county-specific public health benchmarks to be in the moderate or minimal transmission category in all three benchmarks in order to provide hybrid (virtual and in-person) learning.

The ADHS further defines community spread levels with the three thresholds outlined below. These thresholds are consistent with the national standards set by the Coronavirus Task Force.

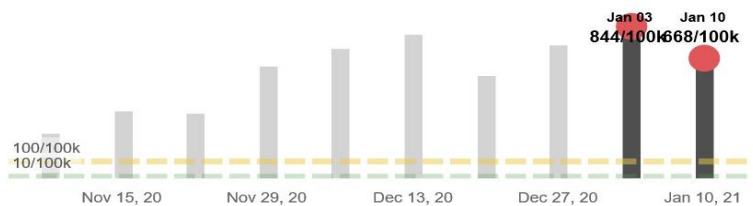
The ADHS Schools Toolkit defines community spread levels with the three thresholds outlined below:

- **CASES:** a two-week decline in the number of cases OR a two-week case rate of less than 100 cases per 100,000 population within the county;
- **PERCENT POSITIVITY:** for initial opening, two weeks of percent positivity less than 7% within the county; and
- **COVID-LIKE ILLNESS (CLI):** two weeks with hospital visits due to CLI below 10% within the region.

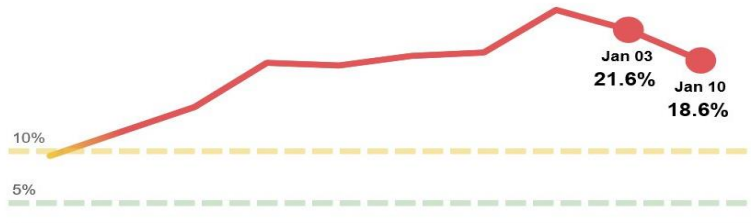
Showing data for **Pima County**
(Southeastern Region)

Recommended Delivery Model: **Virtual**

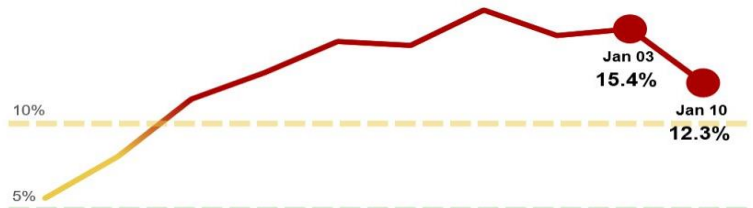
1) Cases per 100,000 individuals



2) Percent positivity



3) Hospital visits for COVID-like illnesses in the region



Benchmarks	Minimal	Moderate	Substantial
Cases	<10 cases/100,000	10-100 cases/100,000	>100 cases/100,000
Percent Positivity	<5%	5-10%	>10%
COVID-like Illness	<5%	5-10%	>10%

Arizona Department of Health Services, <https://www.azdhs.gov/preparedness/epidemiology-disease-control/infectious-disease-epidemiology/index.php#novel-coronavirus-schools>, accessed 8/26/20.

COVID-19 GUIDANCE ON HOME ISOLATION

The Centers for Disease Control and Prevention (CDC), the Arizona Department of Health Services, and Tohono O'odham Nation Health Care updated guidance on home isolation. Accumulating evidence supports ending isolation and precautions for persons with COVID-19 using a symptom-based strategy. Researchers have reported that people with mild to moderate COVID-19 remain infectious no longer than 10 days after their symptoms began, and those with more severe illness or those who are severely immunocompromised remain infectious no longer than 20 days after their symptoms began. Therefore, CDC has updated the recommendations for discontinuing home isolation.

If you tested positive for COVID-19, you need to stay in ISOLATION:

- If you tested positive for COVID-19 or are waiting for results, you should be in **isolation**. Isolation means you need to stay away from others as much as possible. You should stay in a specific "sick room," if possible, and away from other people in your home.
- If you cannot separate from others at home, you should wear a mask.
- Do not attend work, school, be in public areas, or use public transportation.
- Do not share household items like dishes, cups, eating utensils, and bedding.
- Cover coughs and sneezes with a tissue or your elbow. Throw away used tissues in the trash and wash your hands.
- Avoid touching your eyes, nose, and mouth.
- Wash your hands often with soap and warm water for at least 20 seconds.
- Clean high-touch surfaces (tables, doorknobs, light switches, countertops, handles, desks, phones, keyboards, toilets, etc.) daily.
- Reschedule all non-essential medical appointments.
- If you need medical care, call your provider **before going**, and tell them about your illness.

The number of days you should isolate at home depends on your SYMPTOMS, how SICK you were, and whether you are SEVERELY IMMUNOCOMPROMISED.

Please **look at the chart on the back of this sheet** to help you figure out how long you should stay isolated at home.

- 1) If you **had any symptoms** consistent with COVID-19 **and** had **mild or moderate illness**, you should isolate at home until:
 - At least 10 days have passed since your symptoms first started **and**
 - At least 24 hours have passed since your fever resolved (without the use of medication) **and**
 - Your other symptoms have improved.
- 2) If you **had any symptoms** consistent with COVID-19 **and** had **severe or critical illness or** are **severely immunocompromised**, you should isolate at home until:
 - At least 20 days have passed since your symptoms first started **and**
 - At least 24 hours have passed since your fever resolved (without the use of medication) **and**
 - Your other symptoms have improved.
- 3) If you **did not have any symptoms** consistent with COVID-19, you should isolate at home until:
 - 10 days have passed since your first COVID-19 test was done.
- 4) If you **did not have any symptoms** consistent with COVID-19 **and** are **severely immunocompromised**, you should isolate at home until:
 - 20 days have passed since your first COVID-19 test was done.

Contact your healthcare provider or Public Health Nursing for any questions.

CDC guidance, <https://www.cdc.gov/coronavirus/2019-ncov/hcp/disposition-in-home-patients.html>, accessed 7/29/20.

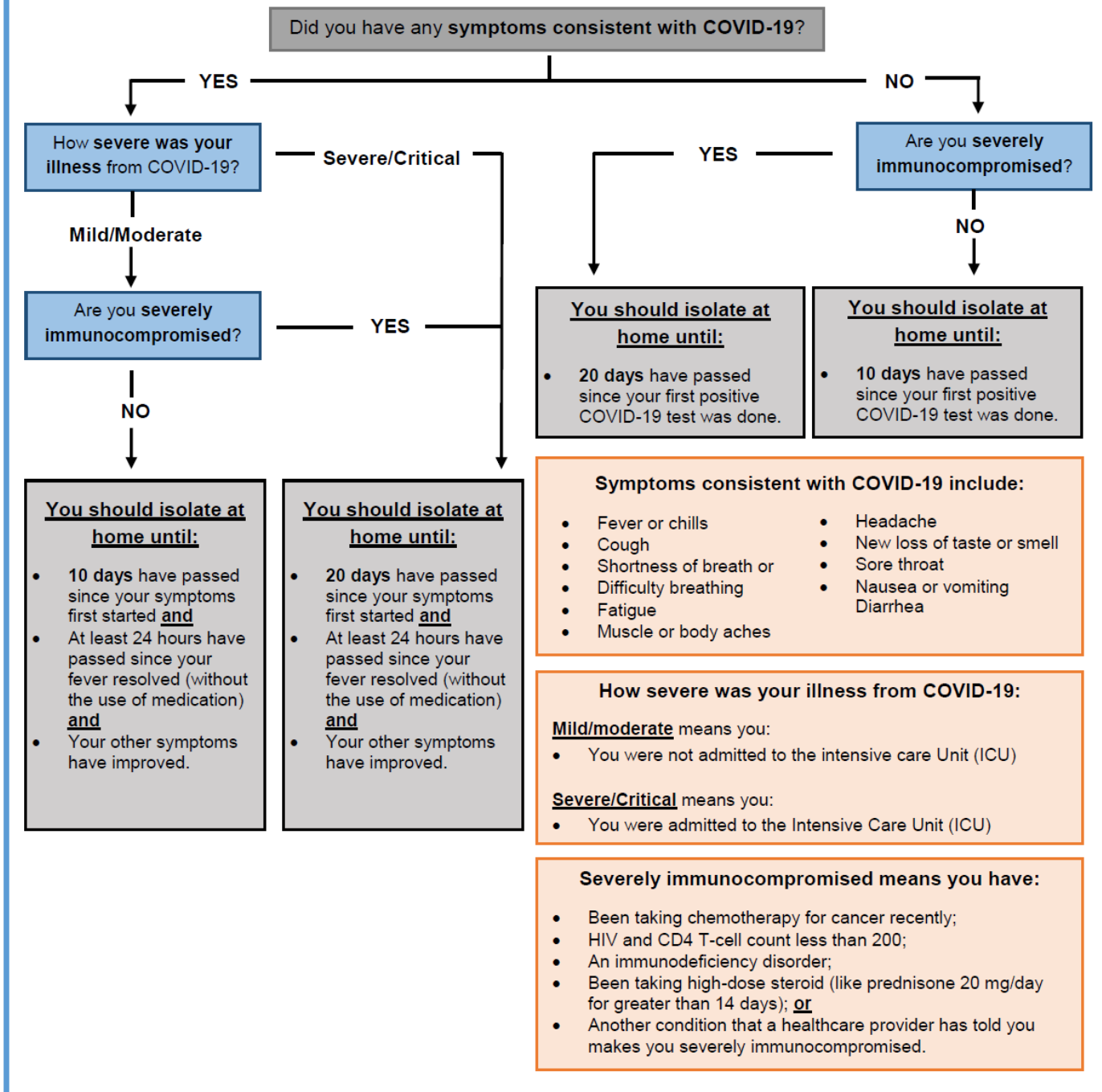
Guidance may change as new information becomes available. Please look for the most up-to-date recommendations.

TOHONO O'ODHAM NATION HEALTH CARE

Updated 7/27/2020 (subject to change)



How long should I isolate at home if I **tested positive** for COVID-19?



Guidance may change as new information becomes available. Please look for the most up-to-date recommendations.

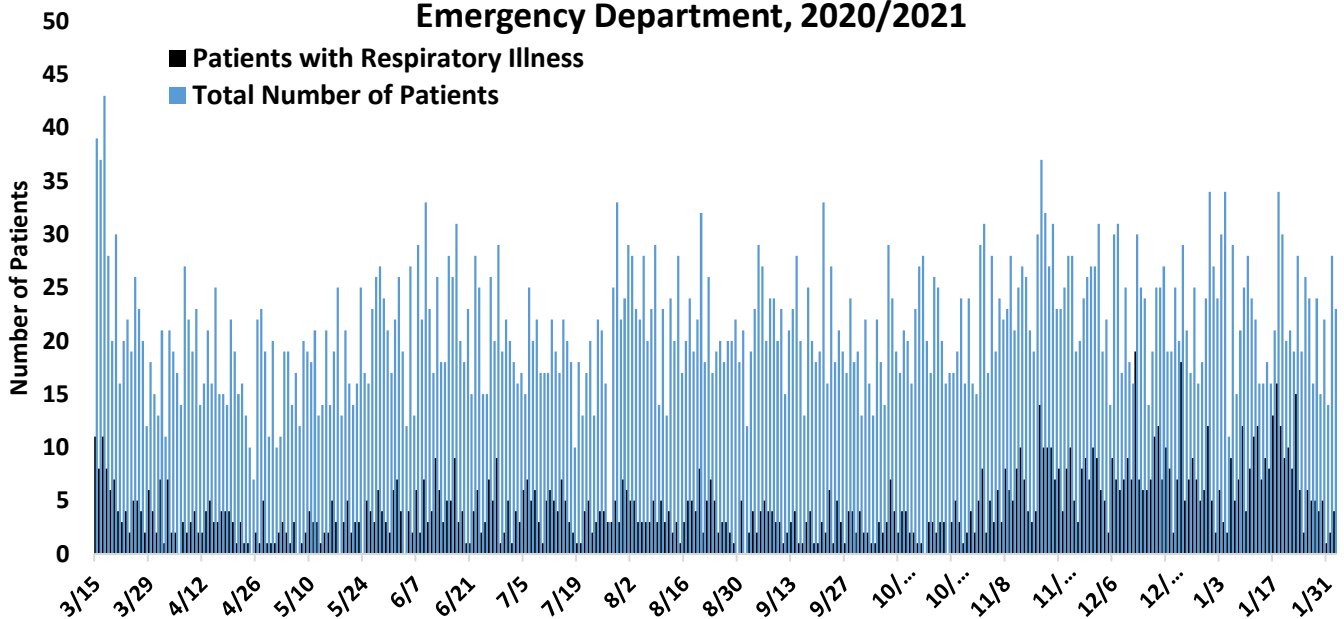
TOHONO O'ODHAM NATION HEALTH CARE

Updated 7/27/2020 (subject to change)



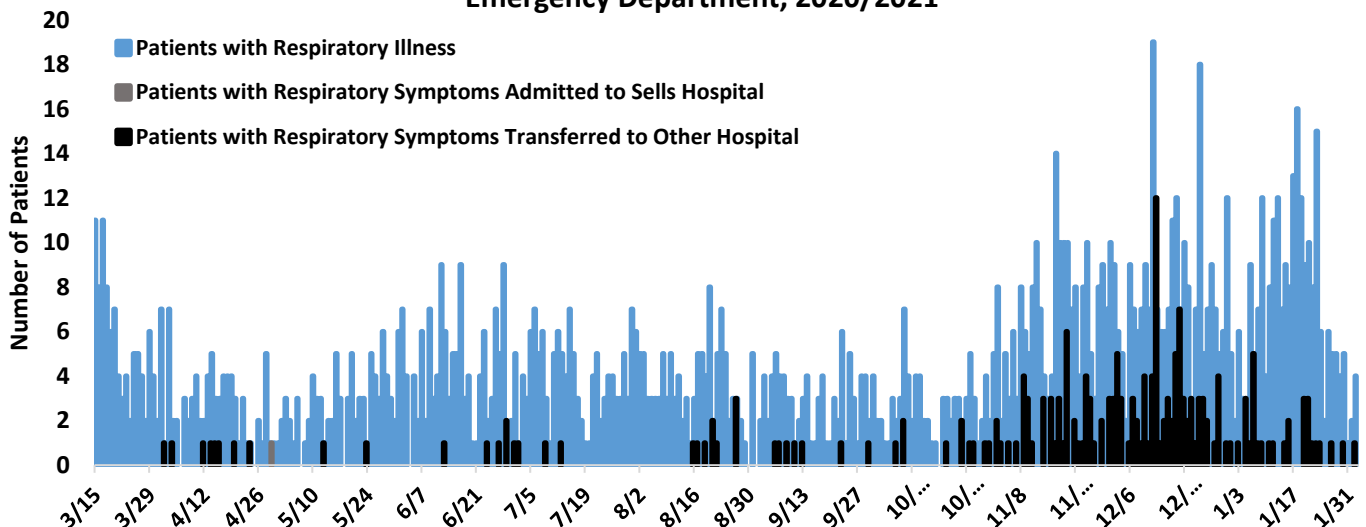
Sells Emergency Department Syndromic Surveillance

Patients Presenting with Respiratory Illness and Daily Totals, Sells Emergency Department, 2020/2021



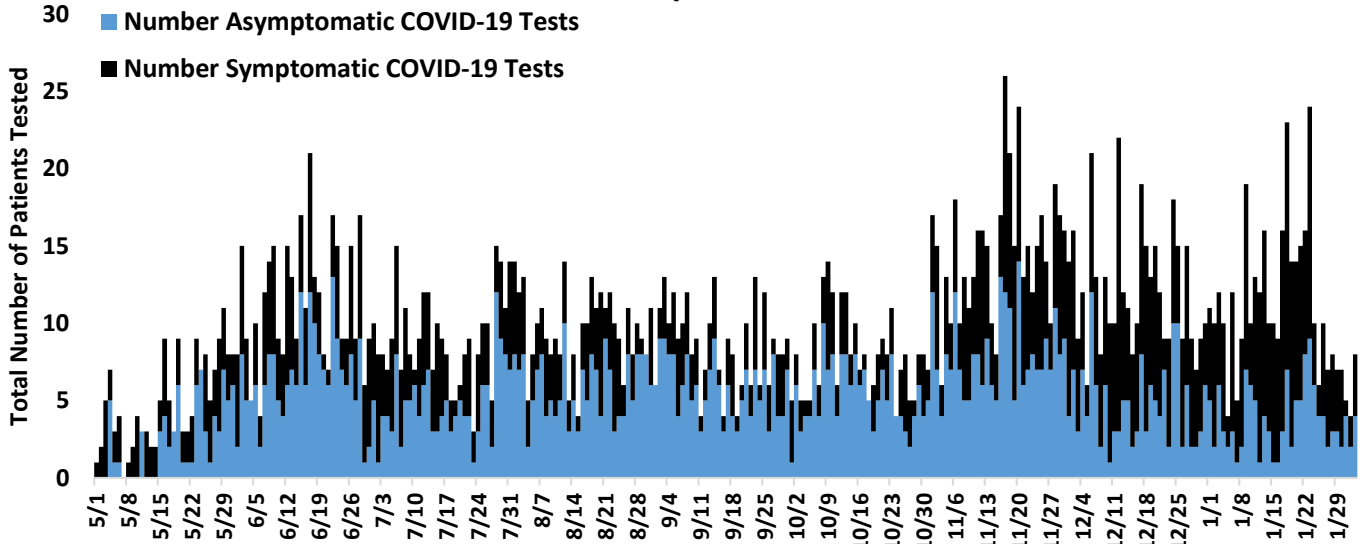
Syndromic surveillance refers to detection of indicators that are discernible before confirmed diagnoses are made. For example, an increase in the number of patients seen with respiratory symptoms could be an indicator of COVID-19. There were between 1 and 6 patients seen daily in Sells Emergency Department with respiratory symptoms during the week of 1/25/2021-1/31/2021.

Patients Presenting with Respiratory Illness and Number of Patients Transferred/Admitted from Emergency Department to Inpatient Hospital, Sells Emergency Department, 2020/2021



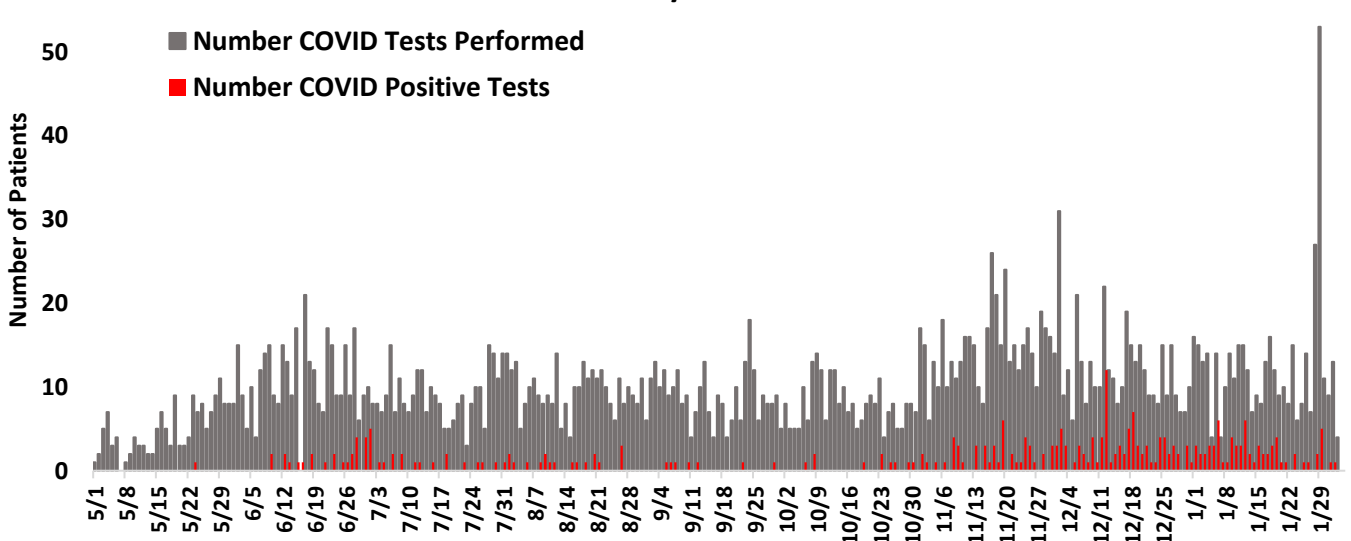
As of 2/3/2021, there were 2 admissions to Sells Hospital and 205 outside transfers for respiratory symptoms from Sells Emergency Department. The number of patients transferred from the emergency department to hospital inpatient units helps to identify severity of disease among the population. This is a level of disease severity that requires a higher level of care, such that care must be managed in the hospital (e.g. with oxygen, mechanical ventilation, etc.).

Patients Tested for COVID-19, Sells Emergency Department, 2020/2021



Same-day COVID-19 testing began on 4/20/20. From 1/25/21– 1/31/21, between 14 and 26 patients were seen each day in the emergency department. Asymptomatic tests are performed on people who have no symptoms (no cough, no diarrhea, no fever, etc.). Symptomatic tests refer to tests performed on people who have symptoms (cough, fever, diarrhea, etc.) of COVID-19.

Results of Patients Tested for COVID-19, Sells Emergency Department, 2020/2021



The week of 1/25/21–1/31/21, 10 people seen in the emergency department tested positive for COVID-19. There have been 285 total positive test results from tests performed in Sells emergency department

EMPLOYEE HEALTH

All employees at TONHC must wear a procedure/surgical mask while at work. All employees in patient care areas must wear a procedure/surgical mask and eye protection. All employees in areas with patients with suspected or confirmed COVID-19 must wear N95 respirator, eye protection, gloves, and gown.

522 TONHC employees and first responders (783 encounters) have been evaluated by employee health for respiratory symptoms related to illness or other reasons (as of 7:00 2/3/2021).

26 TONHC employees and first responders are currently sick (as of 7:00 2/3/2021).

76 TONHC employees tested positive for COVID-19. Each positive result has prompted an internal and external investigation and contact tracing. Based on these investigations, transmissions were more likely due to community spread. Employees possibly exposed are tested for COVID-19.

All employees are required to contact Employee Health with any call-outs. This is to ensure that employees are tested for COVID-19 if sick or exposed and given appropriate guidance on when to return to work. Employees are also required to contact their supervisor when they call out.

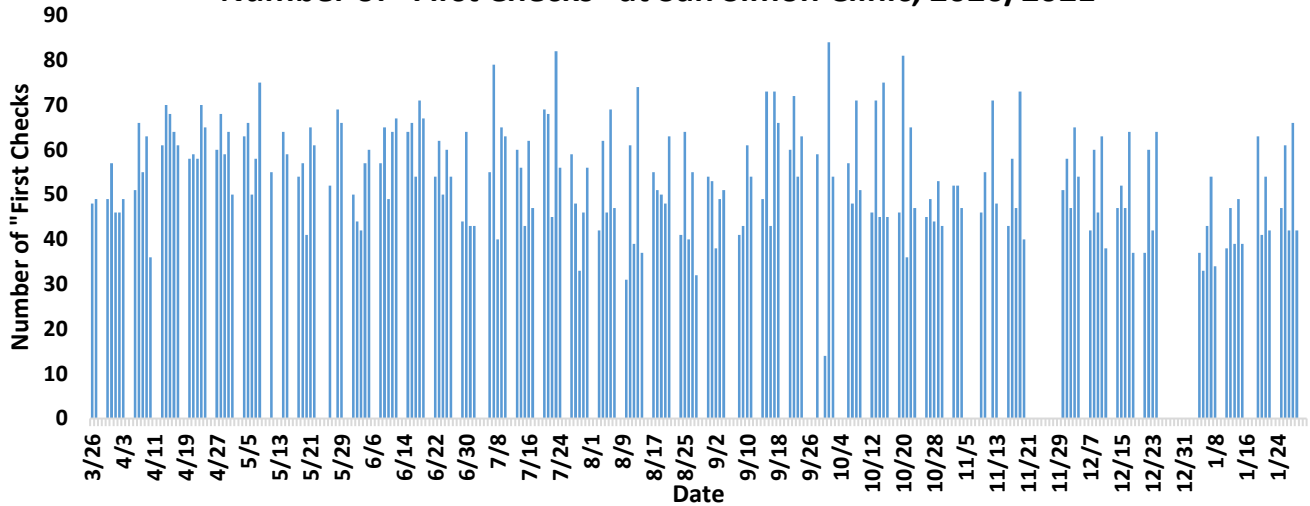
TONHC Infection Control

Infection control prevents or stops the spread of infections in healthcare settings. TONHC COVID-19 infection control team monitors, tracks, and provides guidance on personal protective equipment (PPE such as gowns, gloves, face shields, N95 respirators).

- At the San Xavier, Sells, and San Simon Health Care Centers, the Battelle CCDS Critical Care Decontamination System™ is being used to decontaminate N95 respirators using concentrated, vapor phase hydrogen peroxide (Emergency Use Authorization (EUA) issued by US Food and Drug Administration (FDA)).
- All staff are wearing procedure/surgical masks, and staff caring for patients are also wearing eye protection.
- Staff caring for patients that have or may have been exposed to COVID-19 are wearing gowns, gloves, face shields or other eye protection, and N95 respirators or Powered Air Purifying Respirators (PAPRs).

CLINIC – SAN SIMON

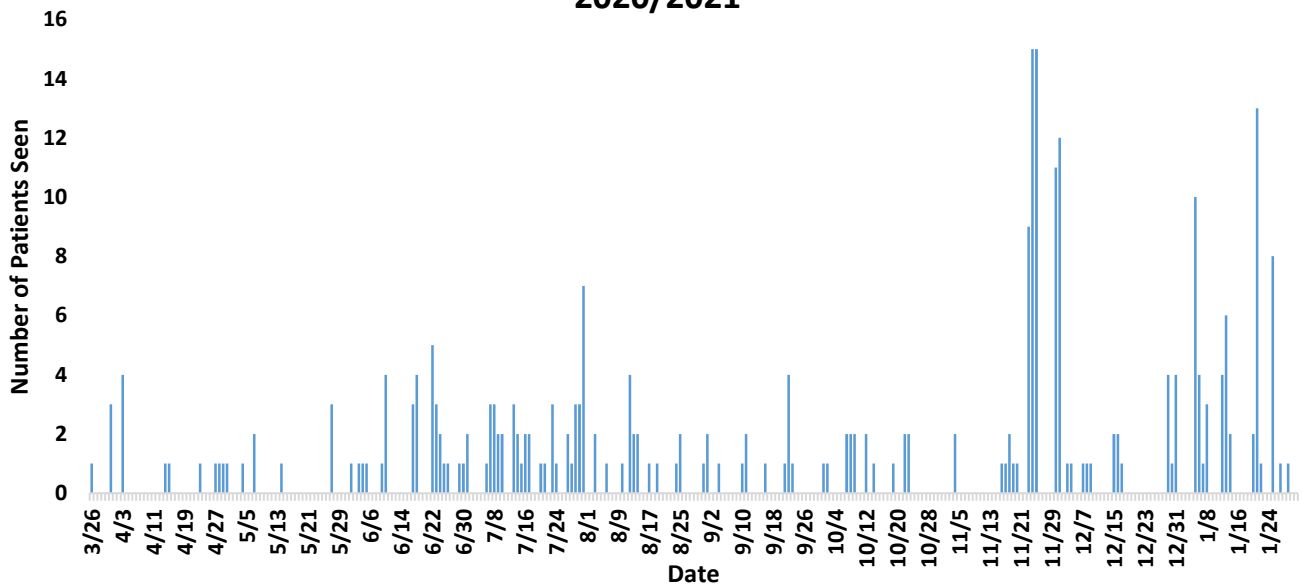
Number of "First Checks" at San Simon Clinic, 2020/2021



Some data is missing the month of December

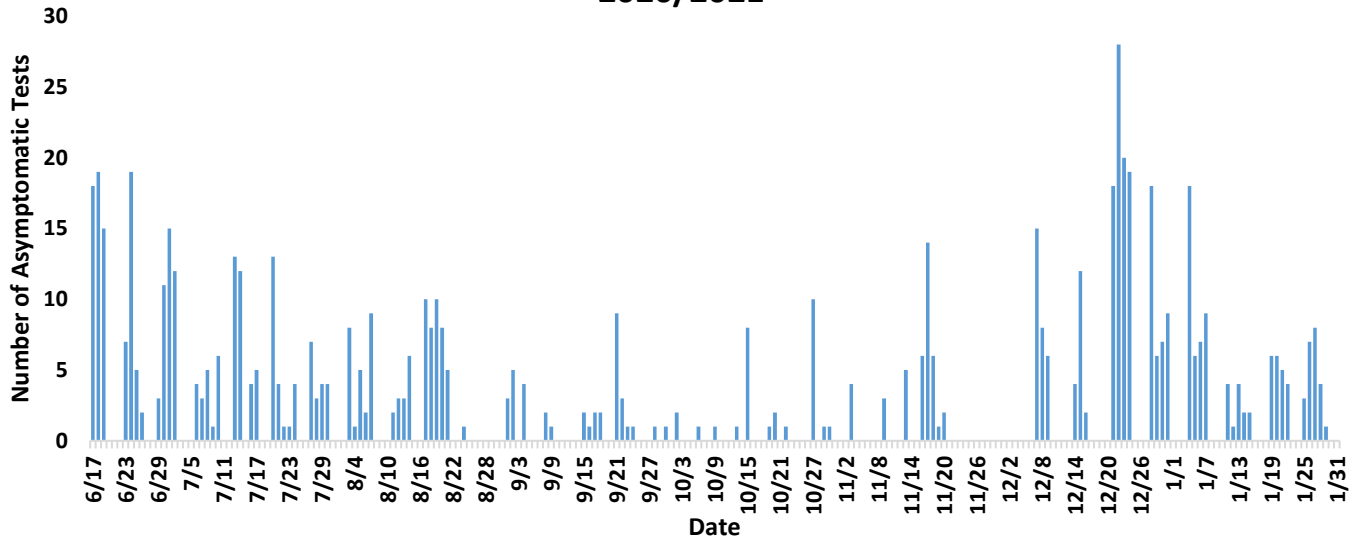
A "first check" involves asking questions about loss of smell or taste, sore throat, fever, cough, and/or difficulty breathing when anyone is entering the clinic or hospital grounds. First checks include employees and patients. As first checks are with entry, they occur multiple times per day for some people. The number of first checks is the number of times questions of respiratory symptoms were asked.

Number of Patients seen at San Simon Respiratory Clinic, 2020/2021



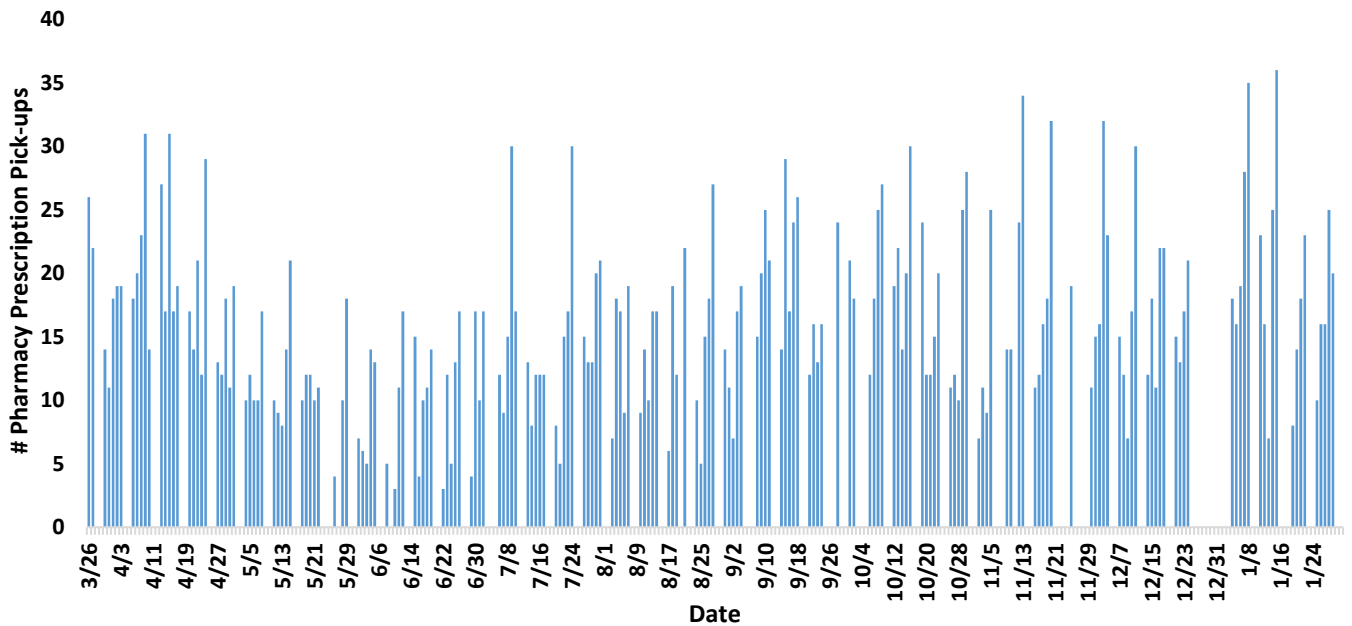
Two patients from San Simon Clinic were admitted to the hospital for respiratory symptoms.

Number of COVID-19 Asymptomatic Tests Performed at San Simon, 2020/2021



These are the number of tests for COVID-19 performed on patients that have no symptoms of COVID-19 (no fever, no cough, no difficulty breathing, etc.), or patients who are symptomatic but only desire to be tested. They are performed on people who may have had exposure to COVID-19, are entering a congregate setting, or are going to be admitted to the hospital.

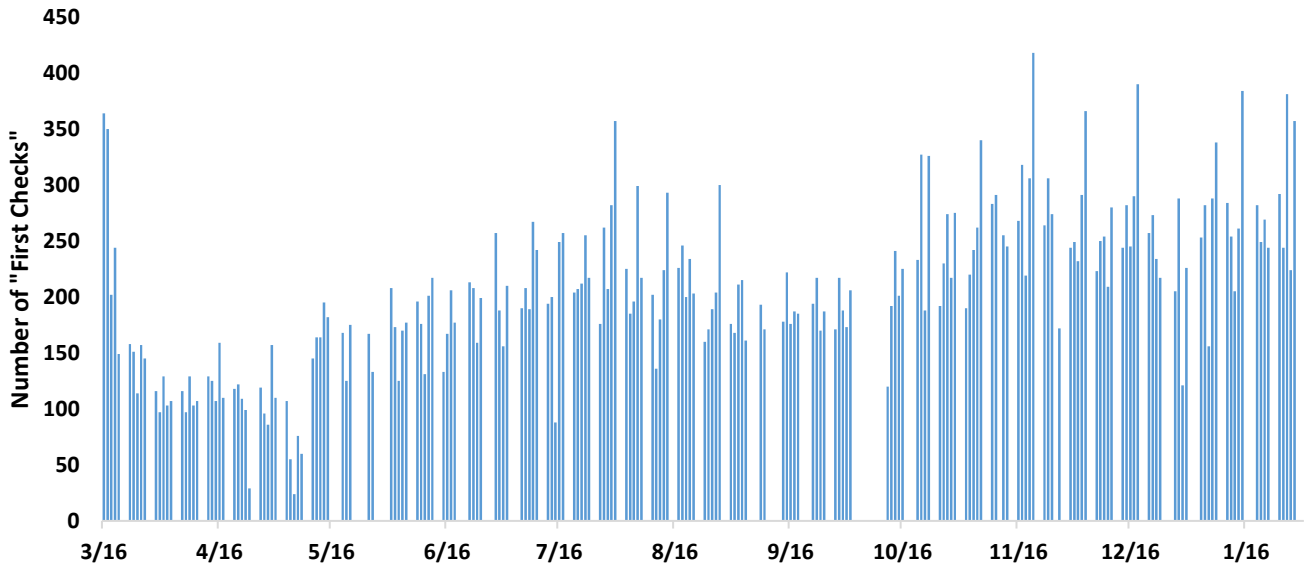
Number of Pharmacy Prescription Pick-ups at San Simon, 2020/2021



Some data are missing the month of December

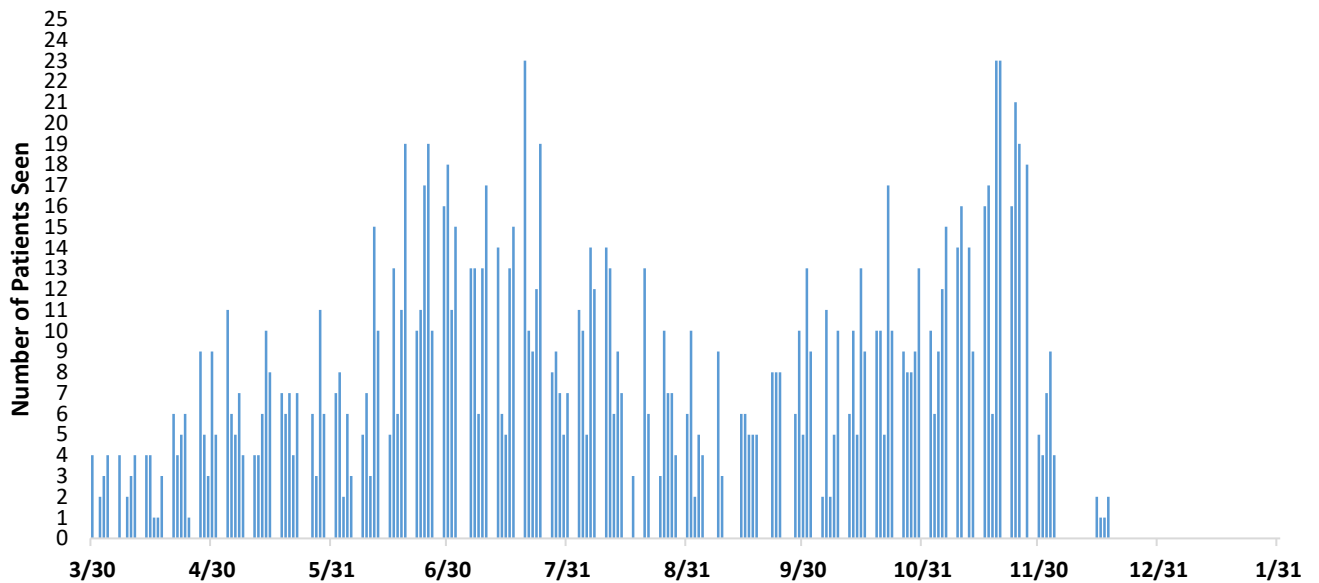
CLINIC – SAN XAVIER

Number of "First Checks" at San Xavier Clinic, 2020/2021



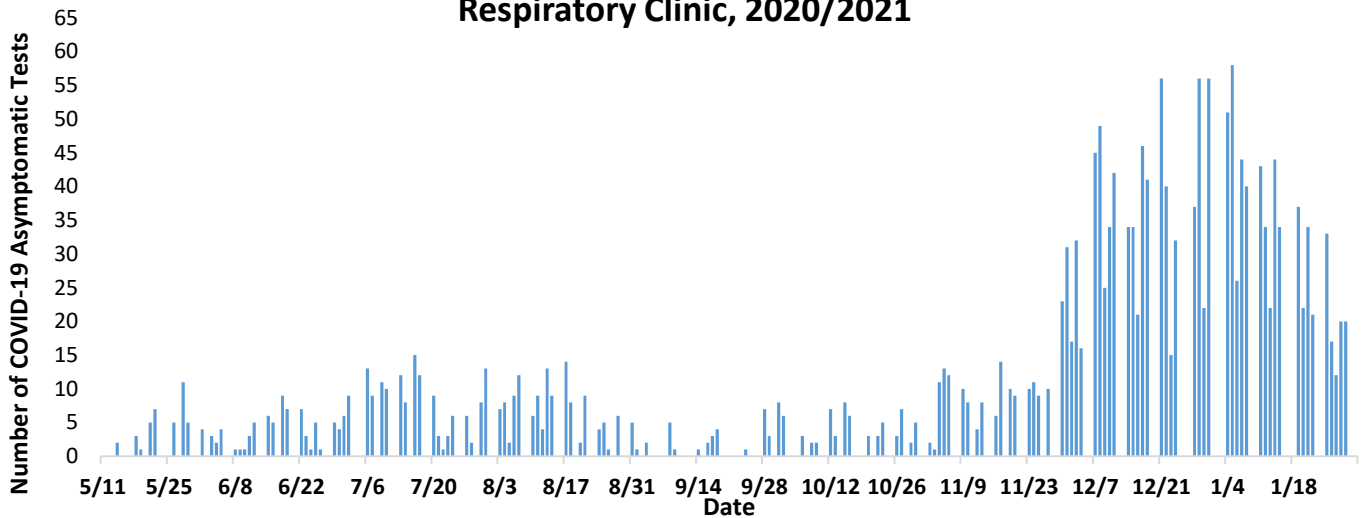
Some data are missing the month of October

Number of Patients seen at San Xavier Respiratory Clinic, 2020/2021



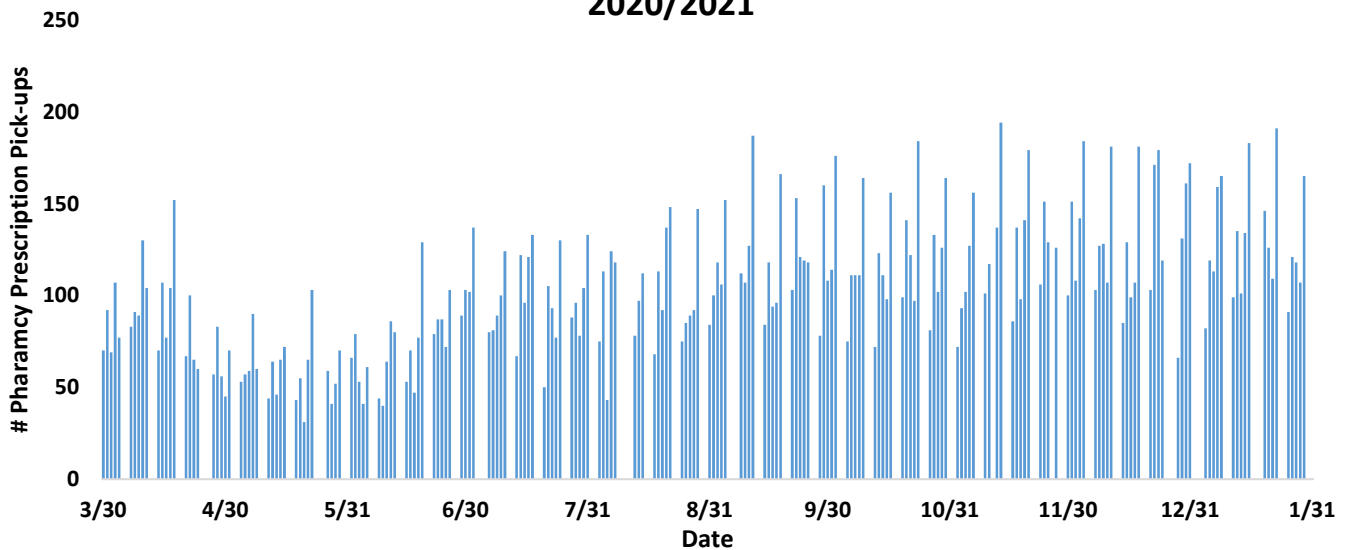
16 patients were seen in the same day respiratory clinic and transported to the hospital from San Xavier clinic.

Number of Drive Up COVID-19 Tests Performed at San Xavier Respiratory Clinic, 2020/2021



Drive-Up testing includes both symptomatic and asymptomatic patients, with testing for symptomatic patients beginning in November at San Xavier Clinic. Asymptomatic testing is for patients that have no symptoms of COVID-19 (no fever, no cough, no difficulty breathing, etc.). They are performed on people who may have had exposure to COVID-19, are entering a congregate setting, or are going to be admitted to the hospital. Patients who have COVID-19 symptoms may be offered a drive up test instead of a Respiratory Clinic visit.

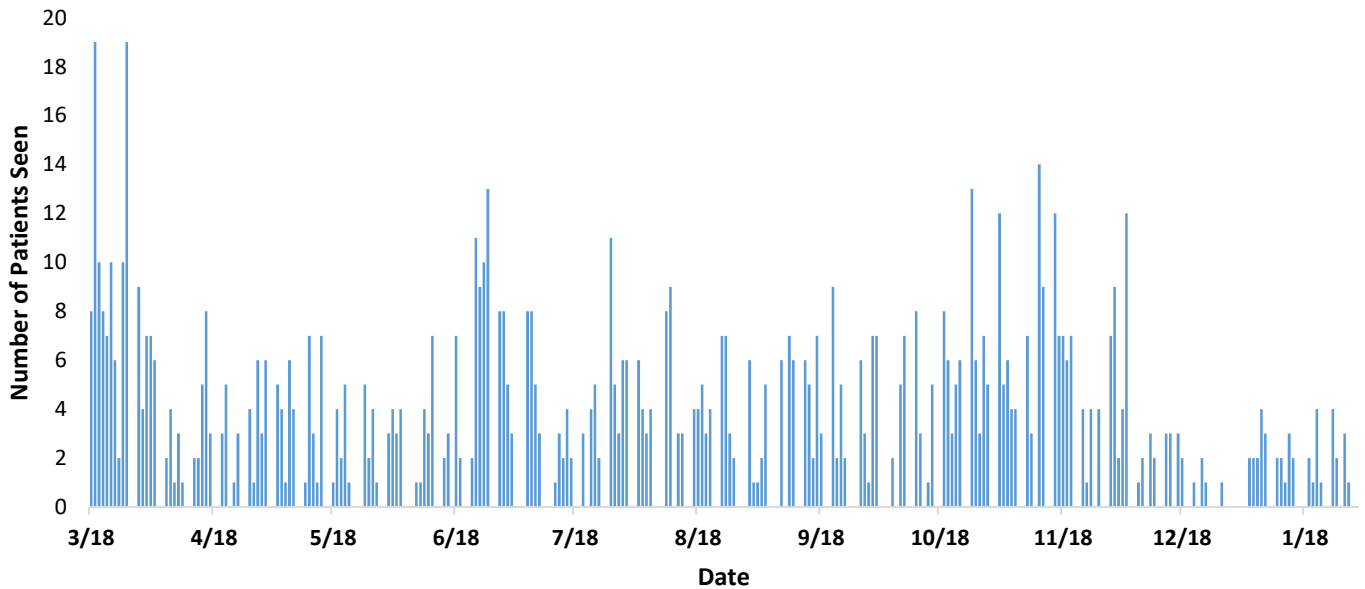
San Xavier Clinic Number of Pharmacy Prescription Pick-ups, 2020/2021



CLINIC – SELLS

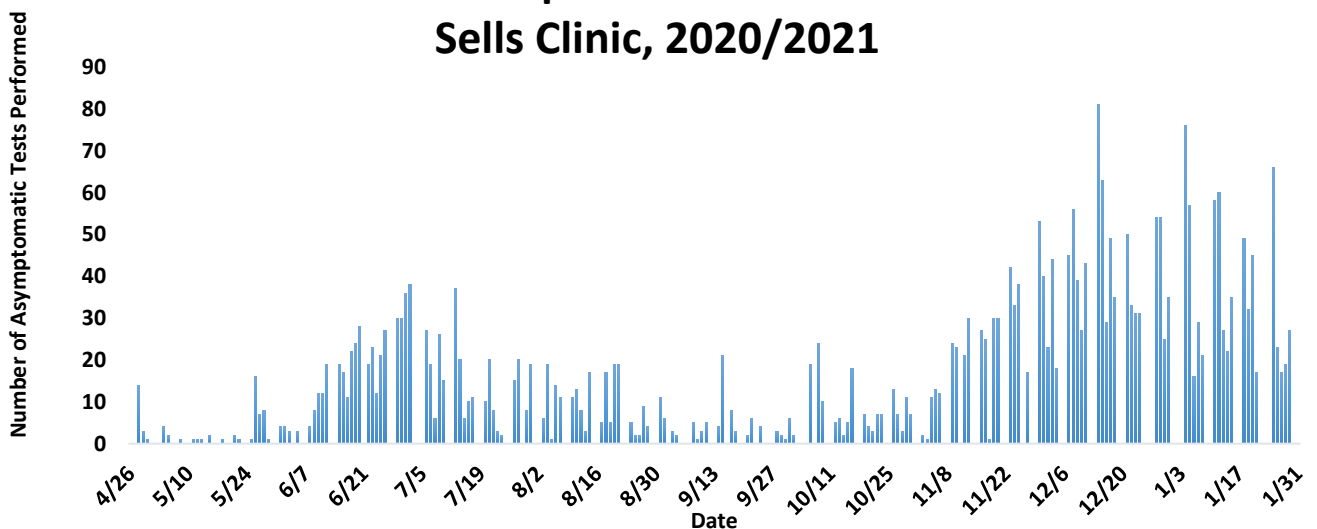
As of November 5, 2020, Sells Hospital has transitioned to asking questions about COVID-19 symptoms as patients enter the clinics/hospital instead of first check at the parking lot entrance. Protocols have been created to ensure all patients and employees are checked at designated areas before entering clinics/hospital building. These include temperature checks and asking about COVID-19 symptoms.

Number of Patients seen at Sells Respiratory Clinic, 2020/2021



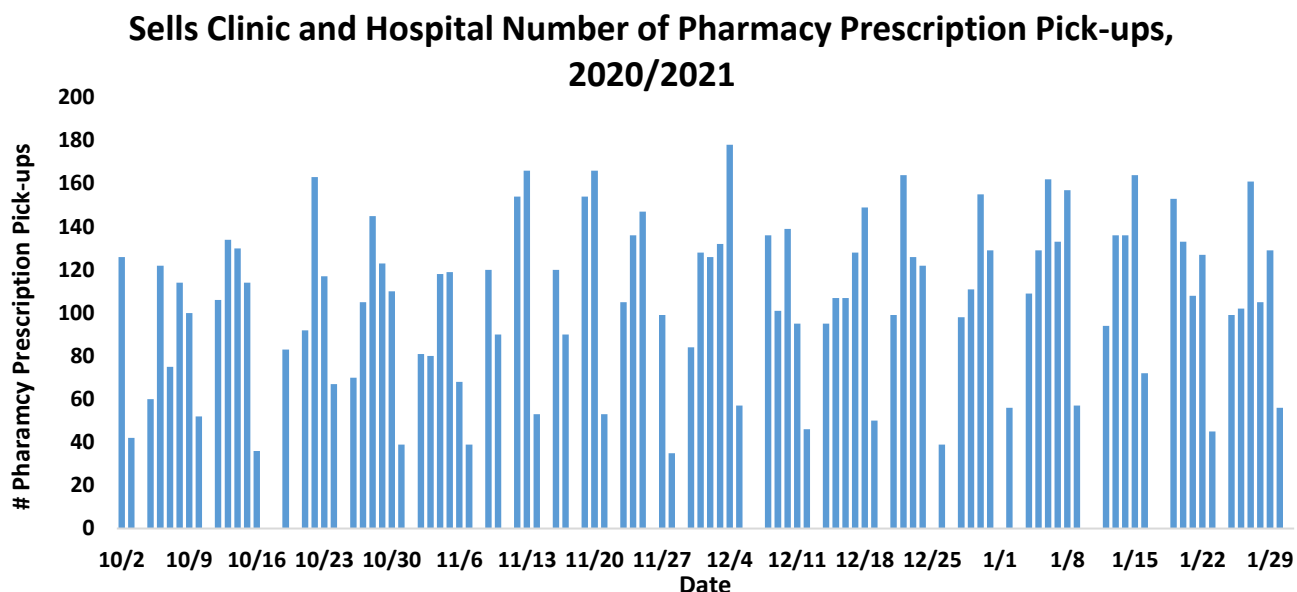
15 patients seen were transferred to the emergency room, 5 patients were directly admitted to the hospital. 3/21/20 and 3/22/20 included patients seen in the emergency department.

Number of Drive-Up COVID-19 Tests Performed at Sells Clinic, 2020/2021



Drive-Up testing includes both symptomatic and asymptomatic patients, with testing for symptomatic patients beginning on 11/23/2020 at Sells Hospital. Asymptomatic testing is for patients that have no symptoms of COVID-19 (no fever, no cough, no difficulty breathing, etc.). They are performed on people who may have had exposure to COVID-19, are entering a

congregate setting, or are going to be admitted to the hospital. Patients who have COVID-19 symptoms may be offered a drive up test instead of a Respiratory Clinic visit.



SELLS INPATIENT UNIT

To minimize possible exposure and conserve personal protective equipment, visitors are not allowed on the inpatient wards. Exceptions are for a minor, woman in labor, and special circumstances. In accordance with state enhanced surveillance advisory related to COVID-19, daily information has been reported to Arizona State using EMResource.

4 patients were admitted to Sells Hospital who tested positive for COVID-19. Inpatient, in-hospital transportation, and postmortem protocols have been developed. Every patient admitted to the inpatient unit of Sells hospital is tested for COVID-19.

Med/Surge Bed Availability – 10 (2/3/2021)

Med/Surge Bed Capacity – 14, with 5 additional beds available if needed for emergency situations

No intensive care unit services

Negative Pressure Rooms – 2 inpatient rooms, 1 in emergency department (inpatient rooms are used by emergency department or other clinics when indicated).

For all transfers outside of TONHC we are calling the Arizona Surge Line. The Arizona Surge Line is a 24/7 toll-free statewide system activated 4/22/20 to keep hospitals and regions of Arizona from being overwhelmed by facilitating COVID-19 patient admission, transfer, and discharge to appropriate levels of care.

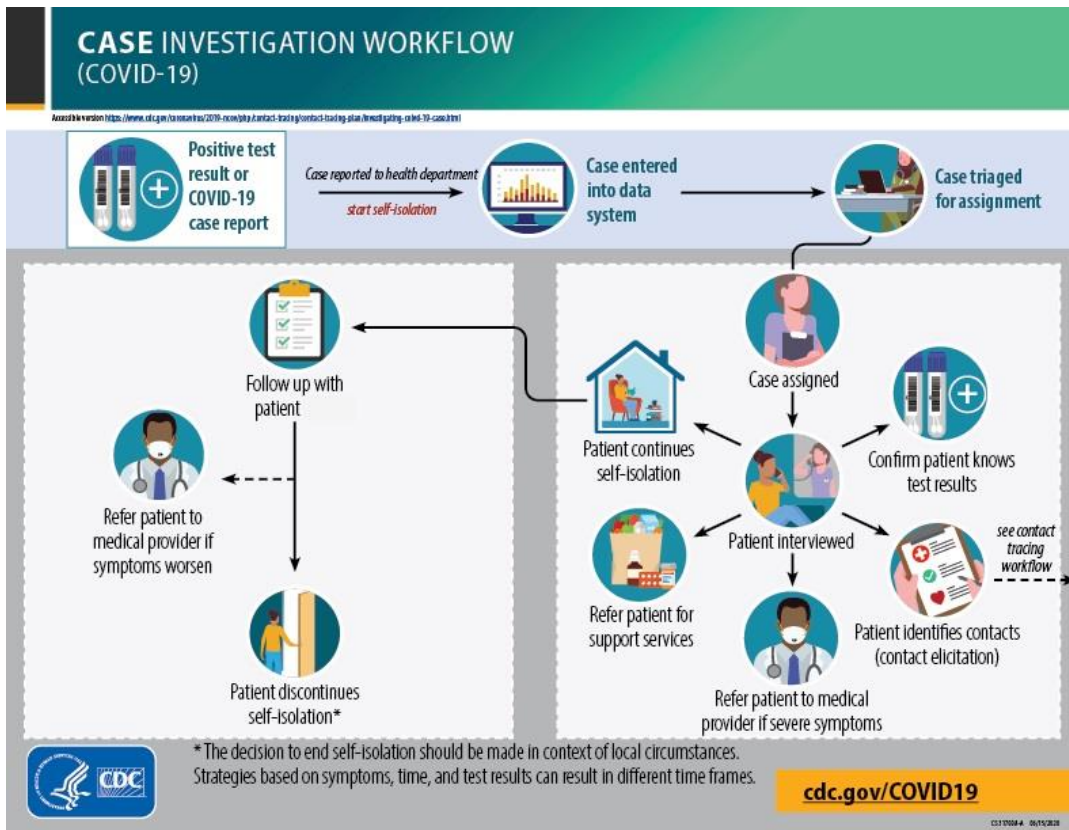
In preparation, our outpatient clinic staff has been cross-trained in inpatient patient care. To date we have trained 16 member of the healthcare workforce to manage patients in the hospital setting. Cross training will allow us to increase the number of patients we can take care of on the inpatient unit. Please note that Sells hospital is not an intensive care unit, so we cannot take care of patients

with COVID-19 requiring intensive respiratory treatment. These patients are transferred to intensive care units at other sites.

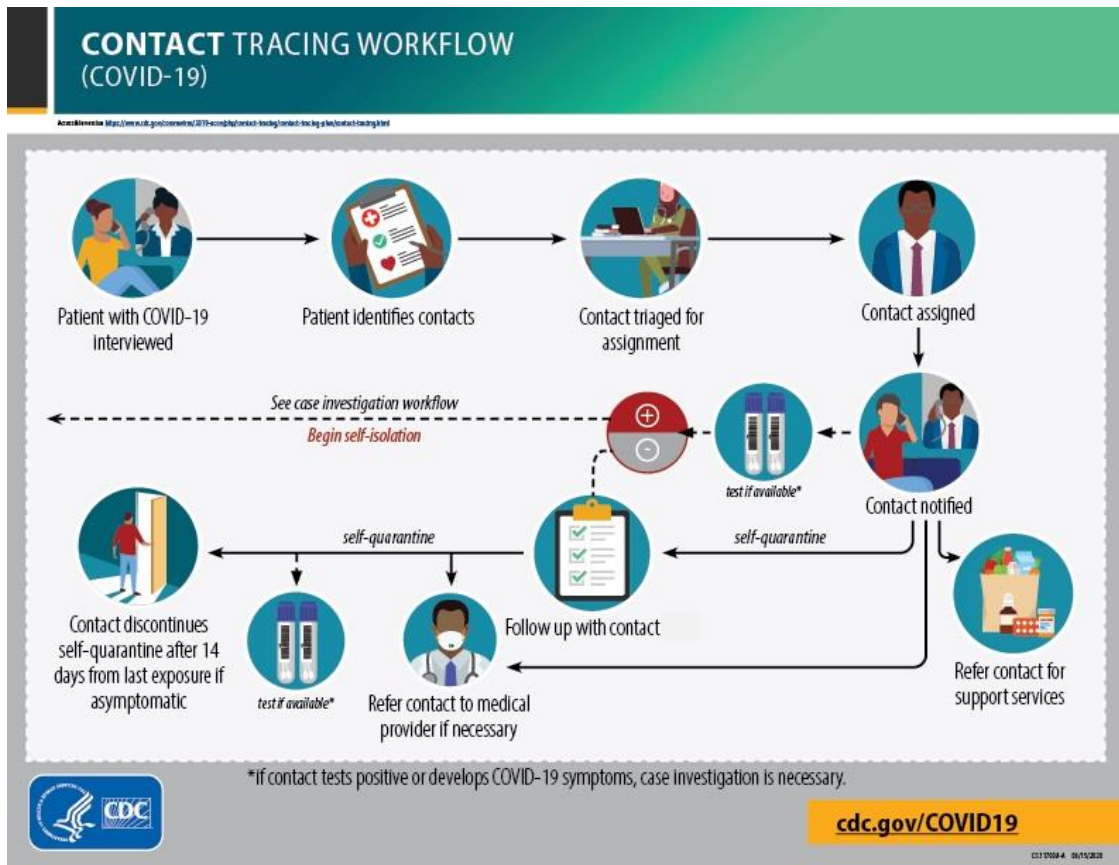
PUBLIC HEALTH NURSING – CONTACT TRACING

As of 2/3/21 at 7:00, **3,515** individual contact tracings have occurred in the Tohono O’odham Nation.

TONHC public health nursing conducts case investigation and contact tracing (involves interviewing). Case investigations are initiated on everyone who tests positive for COVID-19.



Contact tracing, a core disease control measure, is a key strategy for preventing further spread of COVID-19. Contact tracing is part of the process of supporting patients with suspected or confirmed infection. In contact tracing, public health nursing works with patients to help them recall everyone with whom they have had close contact during the timeframe in which they may have been infectious. To protect patient privacy, contacts are only informed that they may have been exposed to a patient with the infection. They are not told the identity of the patient who may have exposed them. Contacts are provided with education, information, and support to understand their risk, what they should do to separate themselves from others who are not exposed, how to monitor themselves for illness, and the possibility that they could spread the infection to others even if they themselves do not feel ill.



**Executive Order
No. 2020-09**

WHEREAS, on March 13, 2020, the Chairman issued a Declaration of the Tohono O’odham Nation Proclaiming a State of Emergency in response to the nationwide spread of COVID-19, therein establishing the Unified Command to centralize all Nation’s resources and efforts in response to the potential devastating effects of COVID-19 on the Nation; and

WHEREAS, on March 16, 2020, the Tohono O’odham Legislative Council passed Resolution No. 20-094 which, in part, authorizes the Chairman or Vice-Chairwoman to enforce quarantine orders, restrict the movement of people within the Nation, and prohibit gatherings of people in groups within the Nation and “require compliance with public health orders or directives issued by the State of Arizona or local governments that would not otherwise apply within the Nation”; and

WHEREAS, on June 17, 2020, Arizona Governor Doug Ducey issued the State of Arizona Executive Order #2020-40, *Containing the Spread of COVID-19, Continuing Arizona Mitigation Efforts*, which, in part, delegated authority to local governments to implement policies regarding face covering requirements in public spaces. Following the AZ Executive Order city mayors began implementing face covering requirements within each of their respective jurisdictions; and

WHEREAS, on July 2, 2020, the Chairman issued Executive Order 2020-08 which set forth all existing executive orders related to COVID-19 mitigation and response in one place to provide clarity and reduce confusion; and

WHEREAS, during the summer months, as anticipated, COVID-19 cases peaked nationwide, putting a strain on the healthcare system and requiring leaders around the county to implement

more strict policies, including the shutdown of in-person learning in educational institutions. Recently, COVID-19 cases have far surpassed the summer peak. COVID-19 cases in the state of Arizona and on the Nation are at an all-time high, threatening the health and safety of the Nation's members. In consultation with Tohono O'odham Health Care COVID-19 Medical Team, the Chairman has determined that a new Executive Order is necessary to reduce the spread of COVID-19 on the Nation.

NOW, THEREFORE BE IT RESOLVED, by the authority vested in the Chairman of the Nation, effective this day, December 2, 2020, the Chairman orders the following:

1. All persons who reside on the Nation are ordered to **stay at home** or at their place of residence, except as needed for employment; to meet medical, educational, health, or safety needs; to obtain food for themselves or their family members; to attend wakes and funeral services; or to tend to legal matters.
2. Individuals and businesses are **not authorized** to enter the exterior boundaries of the Tohono O'odham Nation, with the exception of:
 - a. Employees and volunteers on the Nation, including medical and healthcare providers
 - b. Delivery services providing medicine, food, and other essential items
 - c. Public and private transportation services necessary for the health and safety needs of the individuals on the Nation
 - d. Mail carrier services
 - e. Financial services
 - f. To patronize a business in operation
 - g. Businesses that provide maintenance services that are necessary to maintain the health and safety of the households or buildings on the Nation
 - h. Other necessary professional services as needed
 - i. Businesses and others entering districts for the purpose of providing services or delivering supplies must provide notice to Districts before entering.
3. The Curfew for all Nation's residents remains in effect until further notice. Curfew hours are from **8:00pm to 6:00am**; during these hours' residents shall remain home unless:
 - a. Individual is working at a business in operation during the curfew hours, or traveling to or from work;
 - b. Individual is seeking medical care, or traveling to or from those services;
 - c. Individual is traveling to provide necessary care for another who cannot care for themselves; or
 - d. Individual is seeking protection from a dangerous situation, such as seeking shelter from domestic violence.
4. All playgrounds and sports areas, such as football fields, basketball courts, baseball fields, etc., shall remain closed until further notice; and
5. The Human Resources *Return to Work – Standard Operating Procedures*, and any subsequent revisions, remain in effect; all Executive Branch departments and programs must adhere to the minimum requirements set forth therein. Employees who fail to report to work when assigned are subject to disciplinary action under the Executive Branch Personnel Policies Manual; and
6. The Tohono O'odham Nation Unified Command *Guidelines: Wakes/Funerals*, and any subsequent revisions, remain the minimum standards for all wakes and funeral held on the Nation until further notice. If necessary, district leadership is to implement additional standards.
 - a. At least one (1) individual must be identified as the host/in charge of the wake/funeral services and assumes the responsibility for ensuring compliance with all applicable laws, Executive Orders and local district requirements.
 - b. Individuals in charge of/hosting wakes/funerals, or their designees, are responsible for ensuring all attendees physically distance from others who do not reside in the same household and wear face coverings at all times during attendance.

- c. All wakes and funerals held on the Nation shall be limited to a combined six (6) hours, from beginning to end. Services must be completed in one (1) calendar day during daylight hours, between sunrise and sunset.
7. Social Gatherings. With the exception of persons residing in the same household, all social gatherings are hereby *prohibited* until further notice. "Social gatherings" shall include all events and activities held for social and/or community purposes. Religious services and traditional ceremonies are not considered social gatherings, however, any activities held in association with a religious services or ceremony for social purposes (i.e. gathering before/after for eating, drinking, dancing, socializing, etc.) are prohibited.
8. Face Coverings: Individuals are *required* to wear face coverings in all public spaces.
 - a. "Public Spaces" means any place that is accessible by the general public (indoor and outdoor), including but not limited to: all governmental facilities, grocery stores, gas stations, convenience stores, post offices, establishments serving food or beverages, establishments offering recreational activities or entertainment and places that offer medical or health services or transportation to the general public.
 - b. "Face masks or coverings" means cloth, fabric or other soft material that covers the nose and mouth. Coverings may be homemade or commercially manufactured, or may be improvised from ordinary materials such as a scarf or bandana.
 - c. *Limited Exceptions*. Face coverings are not required for children under the age of two (2), in accordance with CDC guidelines; individuals who should not wear face coverings due to medical conditions, mental health conditions, or developmental disabilities; or first responders where face covering would interfere with their duties.
9. No public feedings. At no time shall meals or to-go plates be offered in association with wakes/funerals, memorials services, rosaries, birthdays, or anniversaries, unless event occurs solely among persons residing in the same household.
10. Physical Distancing and Hygiene.
 - a. When leaving the home, physically distance yourself from others who do not reside in your household by maintaining a 6ft distance from others, when possible.
 - b. Individuals should wash hands and/or use hand sanitizer regularly, avoid touching their face, and disinfect frequently touched surfaces regularly.
 - c. Individuals are discouraged from unnecessary travel.
 - d. Individuals who become ill and demonstrate signs and symptoms related to COVID-19 should remain out of the public, however, are encouraged to seek treatment and testing.
 - e. Tribal enterprises and businesses, operating within the exterior boundaries of the Nation, are *required* to implement guidelines consistent with CDC Guidelines to protect the health and safety of employees and the general public, including requiring face coverings for employees and customers/visitors at all times in public spaces.

BE IT FURTHER RESOLVED, that the Chairman of the Nation continues to strongly urge religious leaders of every denomination practicing within the exterior boundaries of the Nation to suspend inperson services, and instead find other ways to spread their messages in a safe manner during this health pandemic. Mask requirements remain applicable to all religious services, in accordance with order. Additionally, all CDC Guidelines should be adhered to, including by not limited to social distancing, hand washing or hand sanitizing stations readily available, frequent disinfecting of facilities/communal spaces, etc.

BE IT FINALLY RESOLVED, a separate document, titled *Executive Order 2020-09 Examples and Explanations*, shall be incorporated by this reference. This document shall be used to provide additional information and examples and address frequently asked questions in connection with this order.

ORDERED this 2nd Day of December, 2020 in Sells, Arizona.

TONHC Situation Update 02/03/2021 7:00

Wear a mask, physically distance, and wash your hands to protect Tohono O'odham Nation

Executive Order 2020-09 Examples and Explanations

This document is meant to be read in connection with, and to provide further explanations and examples for, Executive Order 2020-09.

Section 1. Stay at Home

Stay at Home orders pertain to all hours of the day: 24 hours a day, 7 days a week.

- This section does not apply to employees or volunteers for essential services and businesses in operation that have been determined by the Nation, Districts, and entities on the Nation.
- Legal matters include attending court hearings and/or meeting with legal counsel; carrying out custody arrangements (exchanging children); handling matters at the court building (filings, making payments, picking up documents, etc.)
- Employment includes local council and committee commitments, community meetings, and volunteer work.
- Persons who fall under the employment exception are only authorized to leave their residence to work, including travel to and from work; any other activities, which do not fall under another exception, are in violation of this order and subject to potential consequences.

Section 2. Outside Entities and Individuals. No further explanation needed.

Section 3. Curfew

Individual participating in authorized conduct outside of their household under section 1 **must be in their home by the curfew hour, 8pm**, and remain in the home until 6am. Work and travel exceptions during curfew hours do not include authorization for any other conduct during these hours, unless conduct falls under exceptions under subsection b-d.

Section 4. Play/Sports Areas. No further explanation needed.

Section 5. Executive Branch Employees. No further explanation needed.

Section 6. Wakes and Funerals

Community spread of COVID-19 has been linked to wakes and funerals held on the Nation, therefore, restrictions are necessary to reduce the spread. These restrictions are temporary and will be reassessed as COVID-19 cases on the Nation decrease.

While not intended, public feedings at wakes and funerals encourage people to congregate, either by people from multiple households coming together to prepare food in the kitchen, or by people standing in lines waiting for food; therefore, public feedings are prohibited at wakes and funerals as stated in section 9 of Executive Order 2020-09.

R-2 12/3/2020

The Unified Command *Guidelines: Wakes/Funerals* sets forth the **minimum requirements** for wakes and funerals, meaning everyone **shall** adhere to these requirements; additional safety measures may be implemented by the host families. Additionally, Districts may implement further requirements, as authorized under this section, which then must be followed in addition to the Unified Command Guidelines.

Attending wake and funeral services is a personal choice; we strongly encourage individuals to make these choices wisely and take all measures necessary to protect themselves and their loved ones as they pay their respects. Additional precautions may include remaining in vehicle at

gravesite, reducing amount of time spent at services, or sending condolences by telephone call or mail.

Section 7. Social Gatherings

Examples of Social Gatherings include, but are **not limited to**:

- Birthday, graduation and holiday celebrations
- Weddings
- Sports events/tournaments
- Band practice with persons who do not reside in the same household.
- Feast gatherings

If you are gathering with persons who do not reside in your household for any purpose not specified as an exception under this order you are in violation of Executive Order 2020-09.

Section 8. Face Coverings. No further explanation needed.

Section 9. No Public Feedings.

This section does not include Districts, Executive Branch programs, or approved food distributors (such as church programs and humanitarian aid organizations) providing food distribution for elders and/or the community. Home delivery and/or car delivery service is the preferred method of distribution to eliminate unnecessary gathering of people waiting for food.

Section 10. Physical Distancing and Hygiene. No further explanation needed.

Section 11. Tribal Enterprises and Businesses. No further explanation needed.

Executive Order 2020-09 executed on December 2, 2020

APPENDIX

Confirmed COVID-19 Cases and Absolute Change among Enrolled Tohono O'odham Nation Members by Week, 2020

Week (2020)	Cumulative COVID-19 Cases Among Enrolled Tohono O'odham Tribal Members	Absolute Change ^s in Cumulative Case Counts from Previous Week
June 24 th – June 30 th	189	
July 1 st – July 7 th	241	52
July 8 th – July 14 th	297	56
July 15 th – July 21 st	320	23
July 22 nd – July 28 th	363	43
July 29 th – August 4 th	415	52
August 5 th – August 11 th	456	41
August 12 th – August 18 th	486	30
August 19 th – August 25 th	498	12
August 26 th – September 1 st	508	10
September 2 nd – September 8 th	509	1
September 9 th – September 15 th	535	26
September 16 th – September 22 nd	543	8
September 23 rd – September 29 th	545	2
September 30 th – October 6 th	547	2
October 7 th – October 13 th	555	8
October 14 th – October 20 th	564	9
October 21 st – October 27 th	586	22
October 28 th – November 3 rd	598	12
November 4 th – November 10 th	630	32
November 11 th – November 17 th	681	51
November 18 th – November 24 th	734	53
November 25 th – December 1 st	802	68
December 2 nd – December 8 th	881	79
December 9 th – December 15 th	1005	124
December 16 th – December 22 nd	1088	83
December 23 rd – December 29 th	1171	83
December 30 th – January 5 th	1297	126
January 6 th – January 12 th	1416	119
January 13 th – January 19 th	1513	97
January 20 th – January 26 th	1614	101
January 27 th – February 2 nd	1653	39

Confirmed COVID-19 Cases and Absolute Change among Enrolled Tohono O'odham Nation Members Residing within the Tohono O'odham Nation by Week, 2020

Week (2020)	Cumulative COVID-19 Cases Among Enrolled Tohono O'odham Tribal Members Residing within the Tohono O'odham Nation Boundary	Absolute Change ^s in Cumulative Case Counts from Previous Week
-------------	---	---

June 24 th – June 30 th	82	
July 1 st – July 7 th	106	24
July 8 th – July 14 th	148	42
July 15 th – July 21 st	168	20
July 22 nd – July 28 th	193	25
July 29 th – August 4 th	227	34
August 5 th – August 11 th	256	29
August 12 th – August 18 th	285	29
August 19 th – August 25 th	294	9
August 26 th – September 1 st	299	5
September 2 nd – September 8 th	303	4
September 9 th – September 15 th	328	25
September 16 th – September 22 nd	337	9
September 23 rd – September 29 th	337	0
September 30 th – October 6 th	338	1
October 7 th – October 13 th	346	8
October 14 th – October 20 th	350	4
October 21 st – October 27 th	360	10
October 28 th – November 3 rd	371	11
November 4 th – November 10 th	400	29
November 11 th – November 17 th	433	33
November 18 th – November 24 th	480	47
November 25 th – December 1 st	529	49
December 2 nd – December 8 th	583	54
December 9 th – December 15 th	675	92
December 16 th – December 22 nd	733	58
December 23 rd – December 29 th	782	49
December 30 th – January 5 th	866	84
January 6 th – January 12 th	952	86
January 13 th – January 19 th	1020	68
January 20 th – January 26 th	1101	81
January 27 th – February 2 nd	1128	27

Changes due to added cases and reclassification of residence

TONHC COVID-19 Positive Test Results and Absolute Change by Week, 2020

Week (2020)	TONHC Cumulative Positive COVID-19 Test Results	Absolute Change [†] in Positive Test Results from Previous Week
June 24 th – June 30 th	153	
July 1 st – July 7 th	202	49
July 8 th – July 14 th	251	49
July 15 th – July 21 st	278	27
July 22 nd – July 28 th	302	24
July 29 th – August 4 th	342	40
August 5 th – August 11 th	382	40
August 12 th – August 18 th	403	21
August 19 th – August 25 th	416	13

TONHC Situation Update 02/03/2021 7:00

Wear a mask, physically distance, and wash your hands to protect Tohono O'odham Nation

August 26 th – September 1 st	426	10
September 2 nd – September 8 th	431	5
September 9 th – September 15 th	444	13
September 16 th – September 22 nd	445	1
September 23 rd – September 29 th	447	2
September 30 th – October 6 th	449	2
October 7 th – October 13 th	457	8
October 14 th – October 20 th	464	7
October 21 st – October 27 th	487	23
October 28 th – November 3 rd	505	18
November 4 th – November 10 th	549	44
November 11 th – November 17 th	604	55
November 18 th – November 24 th	667	63
November 25 th – December 1 st	725	58
December 2 nd – December 8 th	824	99
December 9 th – December 15 th	962	138
December 16 th – December 22 nd	1066	104
December 23 rd – December 29 th	1148	82
December 30 th – January 5 th	1276	128
January 6 th – January 12 th	1409	133
January 13 th – January 19 th	1497	88
January 20 th – January 26 th	1584	87
January 27 th – February 2 nd	1630	46



Tohono O'odham Nation: Leadership Update 51

Unified Command

Current and Planned Objectives:

- Operational teams to support COVID-19 response efforts and activities will be identified for activation and sustainment thru COVID surge.
- Maintain responsibility of PPE resource management by acquiring and distributing resources and assets.
- Maintain Alternate Care Site(s) (ACS) capability to include personnel, facilities, and wrap-around services for COVID-19 positive patients. Low level medical needs.
- Reactivate Community Lifeline(s) to support most vulnerable populations through COVID surge.
- Continue to deliver consistent community messaging and information for leadership and all stakeholders.
- Continue to monitor activity and workload of task forces/workgroups to perform gap analysis, resource assessment, contingency planning, partner outreach, and other tasks as required
- Maintain global, national, and state situational awareness of COVID-19 outbreak impacts and any surge in cases that might come from the border environment.
- Integrate best practices and up-to-date safety guidance for the first responder community, healthcare/medical community, supporting personnel, and stakeholders
- Maintain an up-to-date financial and cost analysis of incident-related expenditures and provide updates to senior leadership

Command Emphasis:

- Fatigue and burnout is a concern for personnel that have been activated over the last 9.5 months. Team Leaders and Command Staff will actively monitor.
- We will scale up resources and personnel to ensure span of control.
- Continue to maintain resources at a ready-state for support of healthcare preparedness activities in COVID surge.
- Forward leaning approach for plans, capabilities, and efforts during COVID surge.
- Maintain information sharing and resource management coordination among key stakeholders.
- Continue coordinated and synchronized public messaging regarding COVID-19 and Influenza. Keep the audiences tuned in.
- The Unified Command will continue to coordinate with external partners and agencies to achieve operational objectives.
- Ensure all orders for PPE requests are synchronized, tracked and distributed. EOC resource orders must be submitted using a 213-RR and submitted via eoc@tonation-nsn.gov
- Integrate additional stakeholders to operational briefings with the intent to foster a common operating picture and enhance working partnerships
- Maintain COVID-19 situational awareness of impacts, response actions, and gap analysis for effective support
- The Unified Command must acknowledge and recognize sensitive political, legal, and security issues and develop strategies and or solutions to help establish: clear lines of authority, accountability procedures, personnel relief and rehabilitation, situational awareness, environmental conditions
- Keep the Policy Group and senior leadership adequately informed
- Sustain an operational battle rhythm, to include Planning P methodologies, Incident Action/Coordination/Support Planning



Tohono O'odham Nation: Leadership Update 51

Strategic Actions:

- TON-HC and Unified Command continue to coordinate in supporting the COVID-19 cases. UC Task Force Leader communicates with TON-HC if patient(s) need to be housed in an Alternate Care Sites.
- Unified Command Distribution Team continues in filling resource requests from approved 213-RR's.
- Unified Command Compliance Team continues to monitor the department's compliance with all required safety precautions and assist departments with implementing safety measures.
- Unified Command continues with planning efforts through the State for testing support.

Public Information:

- Daily Stats: Social Media, web page, radio
- Video Projects with TONHC
- TONHC PSA: Vaccine schedule update
- PSA Vaccine Information 2.5.2021
- PSA COVID-19 Vaccination Frequently Asked Questions
- Video: Vaccination Benefits
- Video: COVID-19 Vaccination Considerations for People Who Are Pregnant
- PSA: Superbowl Safety

State of Arizona:

September 1, 2020 – Governor Ducey issued E.O. 2020 – 53, *Driver License Renewals for Arizonans 65 or Older Amending and Extending E.O. 2020 – 08*

September 8, 2020 – Governor Ducey issued E.O. 2020 – 54, *Enhanced Surveillance Advisory - Monitoring The Spread of COVID-19*

November 11, 2020 – Governor Ducey issued E.O. 2020-56 *Enhanced Surveillance Advisory - Tracking the Spread of COVID-19*

- Extending the Enhanced Surveillance Advisory Tracking of COVID-19 which was established in March under Executive Order 2020-13 an additional 60 days

November 18, 2020 – Governor Ducey issued E.O. 2020-57 *Enhanced Surveillance Advisory - Monitoring the Administration of COVID-19 Vaccination*

Additional Online Resources:

Arizona data: [Arizona Department of Health Services](#)

Resilient Arizona Crisis Counseling Program: <https://resilientarizona.org/>

Global Data: [Center for Systems Science AZ Engineering at John Hopkins University](#)

National Guidance: [Centers for Disease Control and Prevention](#)

The COVID-19 Hotline 2-1-1: 211arizona.org

Resources for Arizonans: <https://arizonatogether.org/>

AZ Executive Orders (COVID-19): [Arizona Executive Orders](#)



Tohono O'odham Nation: Leadership Update 51

Community Lifelines:

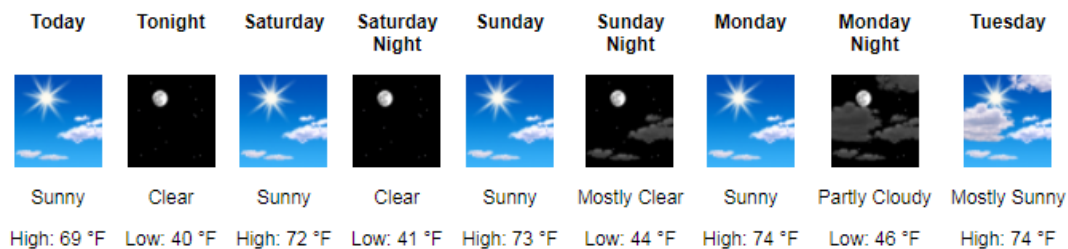
The Unified Command conducted the following food distributions for Districts and OIM (O'odham in Mexico). The distribution included the following contents:

February 2021, distributions will transition to a bi-weekly schedule. The schedule will be as follows:

- Feb 11th, 2021 (41st Shamrock Distribution)
- Feb 25th, 2021 (42nd Shamrock Distribution)

Weather:

We can anticipate an overall pleasant weather outlook going into the weekend. Daytime temps will remain in the low – mid 70's.



Today: Sunny, with a high near 69. Light and variable wind becoming northwest 6 to 11 mph in the afternoon.

Tonight: Clear, with a low around 40. North wind 6 to 9 mph becoming east northeast in the evening.

Saturday: Sunny, with a high near 72. Northeast wind 8 to 15 mph.

Saturday Night: Clear, with a low around 41. North northeast wind 6 to 9 mph becoming east after midnight.

Sunday: Sunny, with a high near 73. East southeast wind 5 to 9 mph becoming west in the afternoon.

Sunday Night: Mostly clear, with a low around 44.

Monday: Sunny, with a high near 74.

Monday Night: Partly cloudy, with a low around 46.

Tuesday: Mostly sunny, with a high near 74.

Tuesday Night: Partly cloudy, with a low around 46.

Wednesday: Mostly sunny, with a high near 73.

Wednesday Night: Partly cloudy, with a low around 44.

Thursday: Sunny, with a high near 71.